



PARTS CATALOG

3TNE88-G1A

PREFACE

1. This Parts Catalog carries all parts incorporated in YANMAR Model 3TNE88-SA, 3TNE88-G1A & 3TNE88C-G1A engines.

2. Parts catalog history

	Parts catalog No.	Model	Published	Remarks
1st edition	000Y00R4540	3TNE88-SA,G1A	1995/5	Disuse old edition
1st revised	000Y00R4541	3TNE88-SA,G1A 3TNE88C-G1A	2001/7	

3. Model name

Column	Model name	Manufactured	E/#
(A)	3TNE88-SA	1995/4~	02650~
(B)	3TNE88-G1A	1995/4~	02619~
(C)	3TNE88C-G1A	1996/1~	00101~

4. Each illustration corresponds to the parts list on the following page.

5. When ordering parts, clearly write down the engine model and serial number, as well as the name and number of each part in your order sheet. This will help insure reliable delivery of the parts you have ordered.

CONTENTS

MODEL : 3TNE88(C)-SA,G1A

PC NO : 0CR10-G45401

Fig.No. GROUP NAME

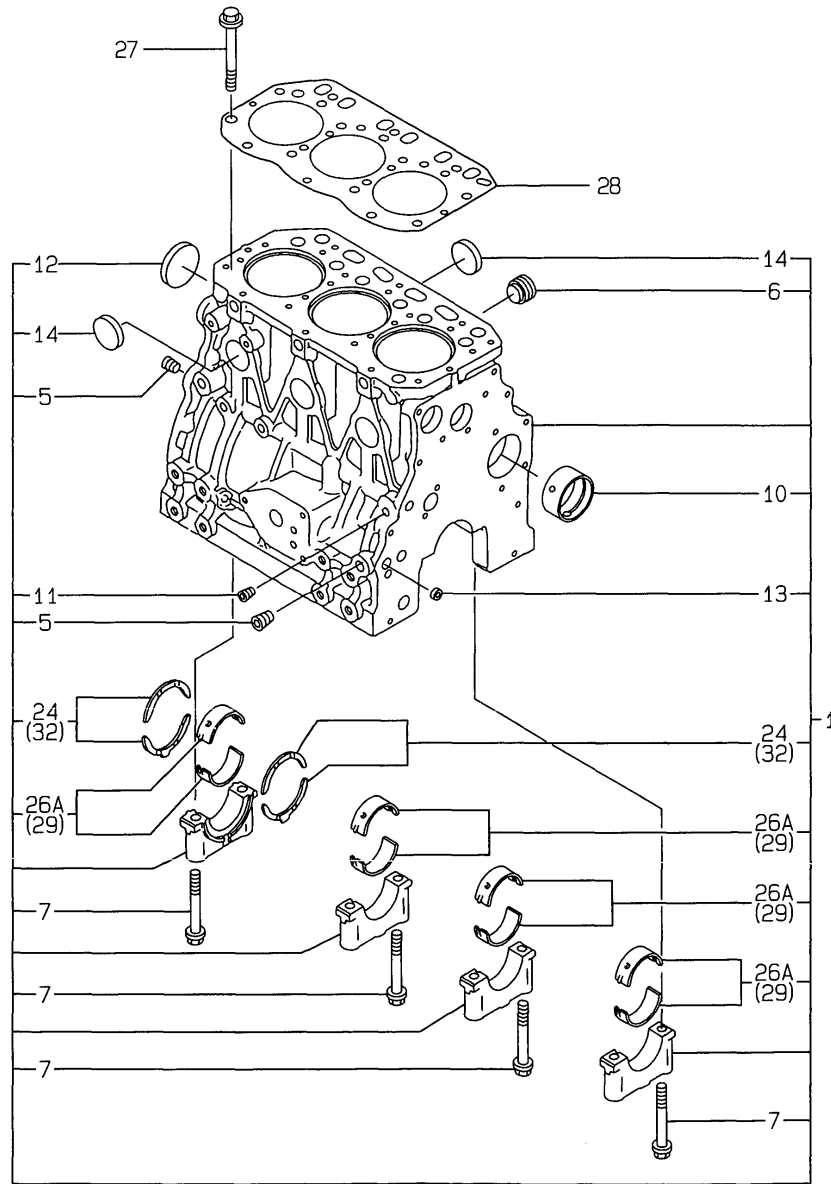
3TNE88(C)-SA,G1A

1. CYLINDER BLOCK
2. GEAR HOUSING
3. FLYWHEEL HOUSING & OIL SUMP
4. CYLINDER HEAD & BONNET
5. SUCTION MANIFOLD & AIR CLEANER
6. EXHAUST MANIFOLD & SILENCER
7. CAMSHAFT & DRIVING GEAR
8. CRANKSHAFT & PISTON
9. LUB.OIL SYSTEM
10. COOLING WATER SYSTEM
11. RADIATOR
12. FUEL INJECTION PUMP
13. GOVERNOR
14. FUEL INJECTION VALVE
15. FUEL FILTER
16. ENGINE CONTROL DEVICE
17. STARTING MOTOR(STANDARD)
18. STARTING MOTOR(COLD DISTRICT)
19. GENERATOR
20. PANEL
21. GASKET SET
22. STARTING MOTOR
23. SHORT BLOCK

Fig.No. GROUP NAME

Fig.1. CYLINDER BLOCK

1. CYLINDER BLOCK



Remarks

- (1) UNDER-SIZE(U.S=0.25)PART.
- (2) OVER-SIZE(O.S=0.25)PART.
- (3) REPAIR PART.

OCR10-G45401 1. CYLINDER BLOCK

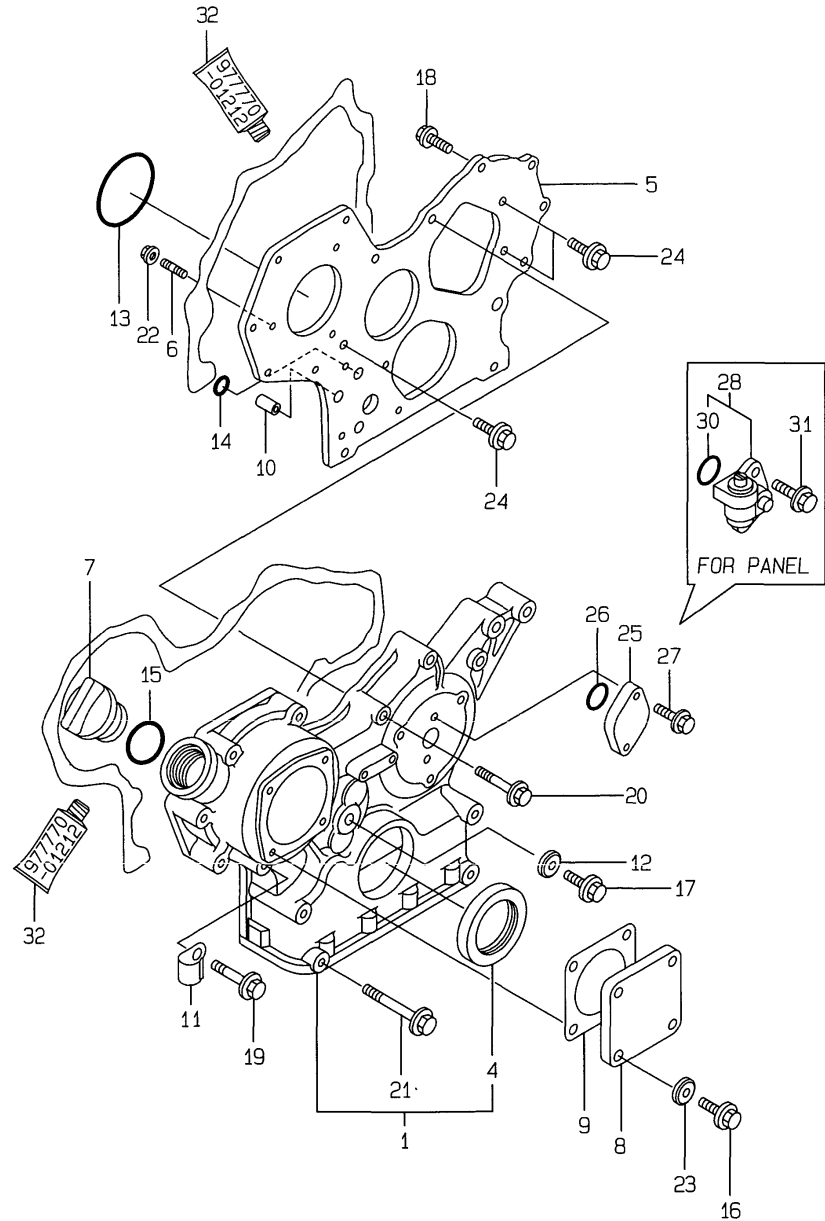
(A)=3TNE88-SA
 (B)=3TNE88-G1A
 (C)=3TNE88C-G1A

(D)=
 (E)=
 (F)=

REF.	LEV.	PARTS NO.	DESCRIPTION	QTY						I	R
				(A)	(B)	(C)	(D)	(E)	(F)		
1	1	729001-01560	BLOCK ASSY, CYLINDER	1	1	1					
5	2	124160-01910	PLUG PT1/4	3	3	3					
6	2	171051-01921	PLUG	1	1	1					
7	2	129150-02020	BOLT, METAL CAP	8	8	8					
10	2	129795-02411	BUSH, CAMSHAFT	1	1	1					
11	2	23871-010000	PLUG PT1/8,SCREW	1	1	1					
I 11-1	2	23876-010000	PLUG PT1/8,SCREW	1	1	1					N
		(A=EXXX) (B=EXXX) (C=EXXX)									
12	2	27231-500000	PLUG 50	1	1	1					
I 12-1	2	129001-01250	PLUG 50	1	1	1					N
		(A=EXXX) (B=EXXX) (C=EXXX)									
13	2	27241-120000	PLUG 12	2	2	2					
14	2	27241-300000	PLUG 30	6	6	6					
24	2	129150-02930	METAL, THRUST	2	2	2					
I 26A	2	129001-02930	MAIN BEARING SET	4	4	4					W 3
		(A=EXXX) (B=EXXX)									
27	1	129150-01200	STUD, CYL. HEAD	14	14	14					
28	1	129001-01340	GASKET, (NON-ASB.)	1	1	1					
29	1	129150-02870	MAIN METAL US=0.25	4	4	4					1
I 32	1	129150-02940	METAL,THRUST.25(4PIE	1	1	1					2

Fig.2. GEAR HOUSING

2.GEAR HOUSING



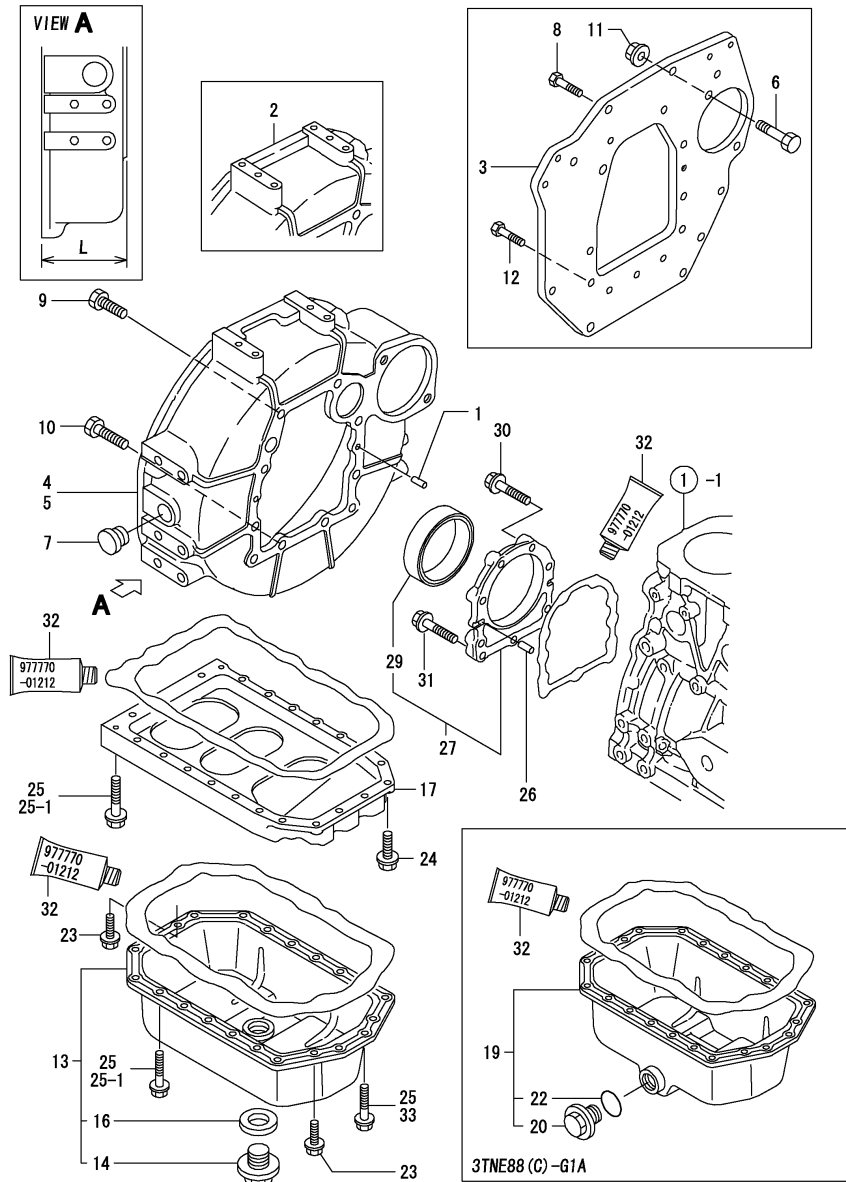
Remarks
 (1) FOR PANEL.
 (2) OPTIONAL PART.

(A)=3TNE88-SA
 (B)=3TNE88-G1A
 (C)=3TNE88C-G1A

(D)=
 (E)=
 (F)=

REF.	LEV.	PARTS NO.	DESCRIPTION	QTY						I	R
				(A)	(B)	(C)	(D)	(E)	(F)		
1	1	719810-01500	HOUSING ASSY, GEAR	1	1	1					
4	2	129795-01800	SEAL, OIL	1	1	1					
5	1	129400-01520	FLANGE,GEARS HOUSING	1	1	1					
6	1	121450-01560	STUD M 8X 22	3	3	3					
7	1	124160-01751	COVER,FILLER	1	1	1					
8	1	124240-01871	COVER, HO-P	1	1	1					
9	1	124240-01883	GASKET, (NON-ASB.)	1	1	1					
10	1	129795-01950	PIPE, KNOCK L=18	2	2	2					
11	1	129150-03100	RETAINER	1	1	1					
12	1	22190-080002	SEAL WASHER 8S	1	1	1					
13	1	121850-51960	O-RING, F.I.PUMP	1	1	1					
14	1	24311-000160	O-RING 1A P-16.0	2	2	2					
15	1	24311-000320	O-RING 1A P-32.0	1	1	1					
16	1	26106-080122	BOLT M 8X 12 PLATED	4	4	4					
17	1	26106-080162	BOLT M 8X 16 PLATED	1	1	1					
18	1	26106-080202	BOLT M 8X 20 PLATED	2	2	2					
19	1	26106-080452	BOLT M 8X 45 PLATED	6	6	6					
20	1	26106-080552	BOLT M 8X 55 PLATED	3	3	3					
21	1	26106-080852	BOLT M 8X 85 PLATED	4	4	4					
I 21-1	1	129001-91840	BOLT M 8X 85 PLATED	4	4	4					R
		(A=E06948) (B=E06847) (C=E00178)									
22	1	26366-080002	NUT M 8	3	3	3					
I 22-1	1	26306-080002	NUT	3	3	3					N
		(A=E0000) (B=E0000) (C=E0000)									
23	1	22190-080002	SEAL WASHER 8S	4	4	4					
24	1	26106-080162	BOLT M 8X 16 PLATED	3	3	3					
25	1	121023-01550	COVER, BLIND	1	1	1					
26	1	24341-000240	O-RING 1A S-24.0	1	1	1					
27	1	26106-060122	BOLT M 6X 12 PLATED	2	2	2					
I 27-1	1	26106-060162	BOLT M 6X 16 PLATED	2	2	2					N
		(A=E0000) (B=E0000)									
28	1	129150-91400	GEAR UNIT,TACHOMETER	1	1	1					1
30	2	24341-000240	O-RING 1A S-24.0	1	1	1					1
31	1	26106-060162	BOLT M 6X 16 PLATED	2	2	2					1
I 32	1	977770-01212	GASKET, LIQUID	1	1	1					W 2
		(A=E0000) (B=E0000)									

Fig.3. FLYWHEEL HOUSING & OIL SUMP



Remarks
 (1) L= 80M/M.
 (2) L= 105M/M.
 (3) OPTIONAL PART.

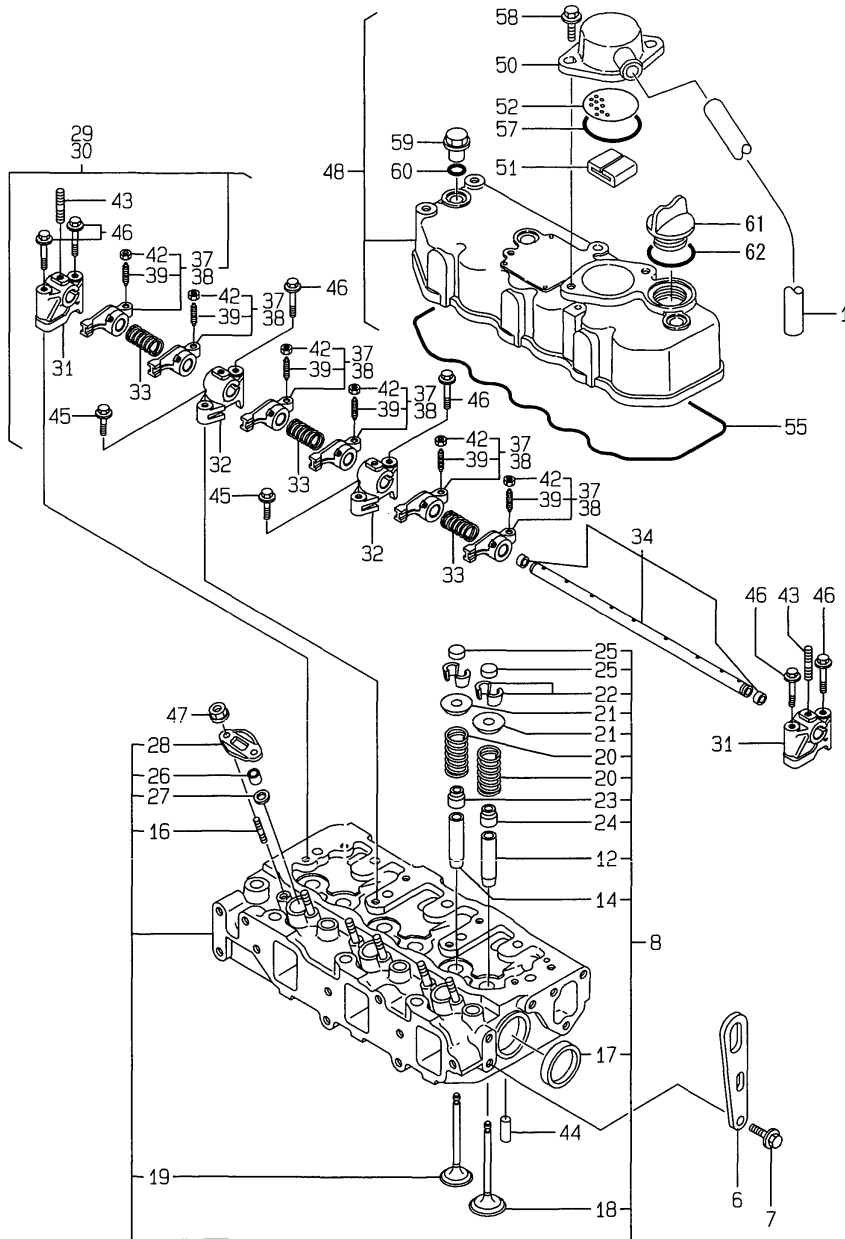
(A)=3TNE88-SA
 (B)=3TNE88-G1A
 (C)=3TNE88C-G1A

(D)=
 (E)=
 (F)=

REF.	LEV.	PARTS NO.	DESCRIPTION	Q'TY						I	R
				(A)	(B)	(C)	(D)	(E)	(F)		
1	1	129100-01580	PARALLEL PIN 8X16	2	2	2					
2	1	119888-01600	HOUSING, FLYWHEEL	1							
3	1	129129-01600	FLANGE, MOUNTING	1							
4	1	171301-01600	HOUSING, FLYWHEEL	1							1
4-1	1	129612-01600	HOUSING, FLYWHEEL	1							N 1
(A=E05144)											
5	1	171420-01600	HOUSING, FLYWHEEL	1	1	1					2
6	1	121476-01620	BOLT	2							
7	1	119620-01750	CAP, FLYWHEEL COVER	1	1	1					
8	1	26206-100202	BOLT M10X20	6							
9	1	26206-100252	BOLT M10X25	6	6	6					
10	1	26206-100302	BOLT M10X30	4	4	4					
11	1	26367-120002	U-NUT M12	2							
12	1	26206-100252	BOLT M10X25	4							
13	1	729102-01540	SUMP ASSY, LUB. OIL	1							
14	2	119640-01640	DRAIN PLUG M22	1							
16	2	22190-220002	SEAL WASHER 22S	1							
17	1	129100-01730	SPACER, OIL SUMP	1	1	1					
19	1	129100-01760	SUMP ASSY, OIL		1	1					
20	2	171301-01640	PLUG M22		1	1					
22	2	24341-000250	O-RING 1A S-25.0		1	1					
23	1	26106-080162	BOLT M 8X 16 PLATED	4	4	4					
24	1	26106-080252	BOLT M 8X 25 PLATED	2	2	2					
25	1	26106-080452	BOLT M 8X 45 PLATED	20	20	20					
I 25-1	1	26106-080452	BOLT M 8X 45 PLATED	16	16	16					K
(A=FROM 1ST) (B=FROM 1ST) (C=FROM 1ST)											
26	1	129100-01580	PARALLEL PIN 8X16	2	2	2					
27	1	129100-01640	CASE ASSY, OIL SEAL	1	1	1					
29	2	129795-01780	SEAL, OIL	1	1	1					
30	1	26106-080302	BOLT M 8X 30 PLATED	6	6	6					
30-1	1	129486-01670	BOLT M8X30,COLLAR HD	6	6	6					R
(A=E05144) (B=E05425) (C=E00119)											
31	1	26106-080352	BOLT M 8X 35 PLATED	3	3	3					
32	1	97770-01212	GASKET, LIQUID	1	1	1					W 3
(A=E05144) (B=E05425) (C=E00119)											
I 33	1	26106-080502	BOLT M 8X 50 PLATED	4	4	4					W
(A=FROM 1ST) (B=FROM 1ST) (C=FROM 1ST)											

Fig.4. CYLINDER HEAD & BONNET

4.CYLINDER HEAD & BONNET



(A)=3TNE88-SA
(B)=3TNE88-G1A
(C)=3TNE88C-G1A

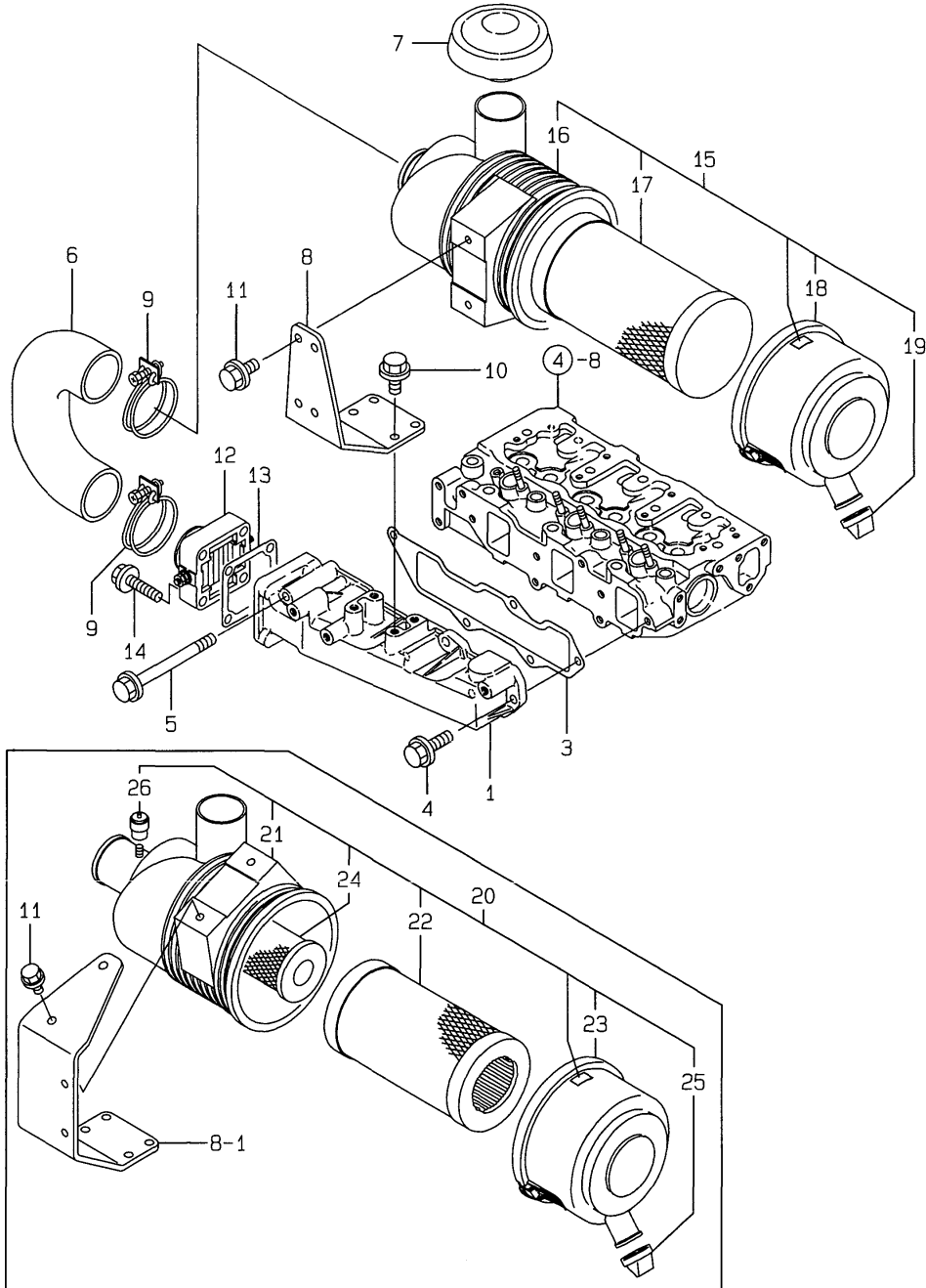
(D)=
(E)=
(F)=

REF.	LEV.	PARTS NO.	DESCRIPTION	QTY						I	R
				(A)	(B)	(C)	(D)	(E)	(F)		
1	1	171350-03090	PIPE, BREATHER	1	1	1					
6	1	124736-07900	LIFTER, ENGINE	2	2	2					
7	1	26106-080142	BOLT 8X 14 PLATED	4	4	4					
8	1	129001-11700	HEAD ASSY, CYLINDER	1	1	1					
12	2	120130-11860	GUIDE, VALVE	3	3	3					1
14	2	129150-11810	GUIDE, VALVE	3	3	3					1
16	2	26216-060202	STUD M 6X 20 PLATED	6	6	6					
17	2	27241-400000	PLUG 40	2	2	2					
18	2	129100-11100	VALVE, INTAKE	3	3	3					
19	2	129100-11110	VALVE, EXHAUST	3	3	3					
20	2	129795-11120	SPRING, VALVE	6	6	6					
21	2	129795-11180	RETAINER, SPRING	6	6	6					
22	2	27310-080000	COTTER 8	6	6	6					
23	2	121400-11340	SEAL, VALVE STEM	3	3	3					
24	2	124460-11340	SEAL, VALVE STEM	3	3	3					
25	2	129150-11370	CAP, VALVE	6	6	6					
26	2	119625-11871	PROTECTOR, NOZZLE	3	3	3					
26-1	2	119625-11870	PROTECTOR, NOZZLE	3	3	3					N
(A=EXXX) (B=EXXX) (C=EXXX)											
27	2	119625-11880	SEAT, NOZZLE	3	3	3					
28	2	119625-11900	RETAINER	3	3	3					
29	1	129155-11241	SHAFT ASSY, ROCKER	1							
30	1	129100-11240	SHAFT ASSY, ROCKER		1	1					
31	2	129155-11260	SUPPORT, ROCKER ARM	2	2	2					
32	2	129155-11270	SUPPORT, ROCKER ARM	2	2	2					
33	2	129150-11280	SPRING	3	3	3					
34	2	129150-11290	SHAFT, ROCKER ARM	1	1	1					
37	2	729402-11650	ARM ASSY, ROCKER	6							
38	2	129100-11650	ARM ASSY, ROCKER		6	6					
39	3	129150-11230	SCREW, VALVE	6	6	6					
42	3	129150-11750	NUT M8XP1.0	6	6	6					
43	2	26226-080182	STUD M 8X 18 PLATED	3	3	3					
44	1	22351-060012	SPRING PIN 6X12	2	2	2					
45	1	26106-080252	BOLT M 8X 25 PLATED	2	2	2					
46	1	26106-080502	BOLT M 8X 50 PLATED	6	6	6					
47	1	26366-060002	NUT M 6	6	6	6					
48	1	129100-11350	BONNET ASSY	1	1	1					
50	2	129150-03020	COVER, BREATHER	1	1	1					
51	2	129150-03070	BAFFLE, BREATHER	1	1	1					
52	2	129150-03080	PLATE, SHELTER	1	1	1					
55	2	129150-11310	GASKET, BONNET	1	1	1					
57	2	24341-000500	O-RING 1A S-50.0	1	1	1					
58	2	26106-080162	BOLT M 8X 16 PLATED	2	2	2					
59	1	124160-11360	KNOB	3	3	3					
60	1	24311-000120	O-RING 1A P 12.0	3	3	3					
61	1	124160-01751	COVER, FILLER	1	1	1					
62	1	24311-000320	O-RING 1A P-32.0	1	1	1					

Remarks
(1) REPAIR PART.

Fig.5. SUCTION MANIFOLD & AIR CLEANER

5. SUCTION MANIFOLD & AIR CLEANER



OCR10-G45401 5. SUCTION MANIFOLD & AIR CLEANER

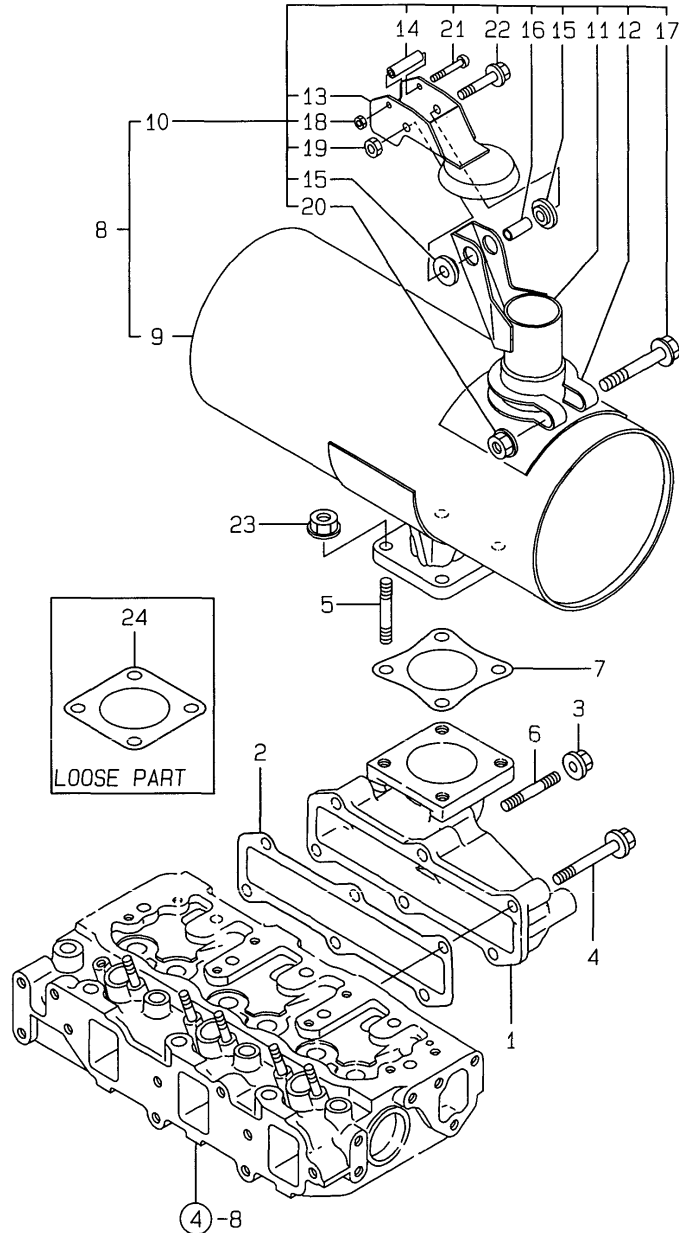
(A)=3TNE88-SA
(B)=3TNE88-G1A
(C)=3TNE88C-G1A

(D)=
(E)=
(F)=

REF.	LEV.	PARTS NO.	DESCRIPTION	QTY						I	R
				(A)	(B)	(C)	(D)	(E)	(F)		
1	1	129001-12100	MANIFOLD	1	1	1					
3	1	129001-12110	GASKET,INT. MANIFOLD	1	1	1					
4	1	26106-080202	BOLT M 8X 20 PLATED	4	4	4					
5	1	26106-080802	BOLT M 8X 80 PLATED	1	1	1					
6	1	129619-12210	HOSE	1	1	1					
7	1	121521-12400	CAP, RAIN	1	1	1					
8	1	129619-12560	BRACKET,AIR CLEANER	1	1						
I 8-1	1	129608-12560	BRACKET,AIRCLEANER	1	1	1					R
		(A=E03814) (B=E03598)									
9	1	23000-060000	CLAMP 60	2	2	2					
10	1	26106-080182	BOLT M 8X 18 PLATED	4	4	4					
I 10-1	1	26013-080222	BOLT M 8X 22	4	4	4					N
		(A=E05767) (B=E05771) (C=E00135)									
11	1	26106-080182	BOLT M 8X 18 PLATED	2	2	2					
I 11-1	1	26013-080222	BOLT M 8X 22	2	2	2					N
		(A=E05767) (B=E05771) (C=E00135)									
12	1	129120-77501	HEATER, AIR	1	1	1					
13	1	129150-77511	GASKET, (NON-ASB.)	1	1	1					
14	1	26106-080352	BOLT M 8X 35 PLATED	4	4	4					
15	1	129608-12500	AIRCLEANER	1	1						
I 15-1	1	129608-12501	AIRCLEANER	1	1	1					R
		(A=E03814) (B=E03598)									
16	2	129608-12510	BODY ASSY	1	1						
I 16-1	2	129608-12511	BODY, AIR CLEANER	1	1	1					R
		(A=E03814) (B=E03598)									
17	2	119808-12520	ELEMENT, OUTER	1	1	1					
18	2	119808-12530	COVER	1	1	1					
19	2	119808-12540	VALVE, UNLOADER	1	1	1					
I 20	1	119822-12500	CLEANER ASSY, AIR	1	1	1					W
		(A=E03814) (B=E03598)									
I 21	2	119822-12510	BODY	1	1	1					W
		(A=E03814) (B=E03598)									
I 22	2	119808-12520	ELEMENT, OUTER	1	1	1					W
		(A=E03814) (B=E03598)									
I 23	2	119808-12530	COVER	1	1	1					W
		(A=E03814) (B=E03598)									
I 24	2	129051-12530	ELEMENT, INNER	1	1	1					W
		(A=E03814) (B=E03598)									
I 25	2	119808-12540	VALVE, UNLOADER	1	1	1					W
		(A=E03814) (B=E03598)									
I 26	2	126650-12680	INDICATOR	1	1	1					W
		(A=E03814) (B=E03598)									

Fig.6. EXHAUST MANIFOLD & SILENCER

6.EXHAUST MANIFOLD & SILENCER



(A)=3TNE88-SA
(B)=3TNE88-G1A
(C)=3TNE88C-G1A

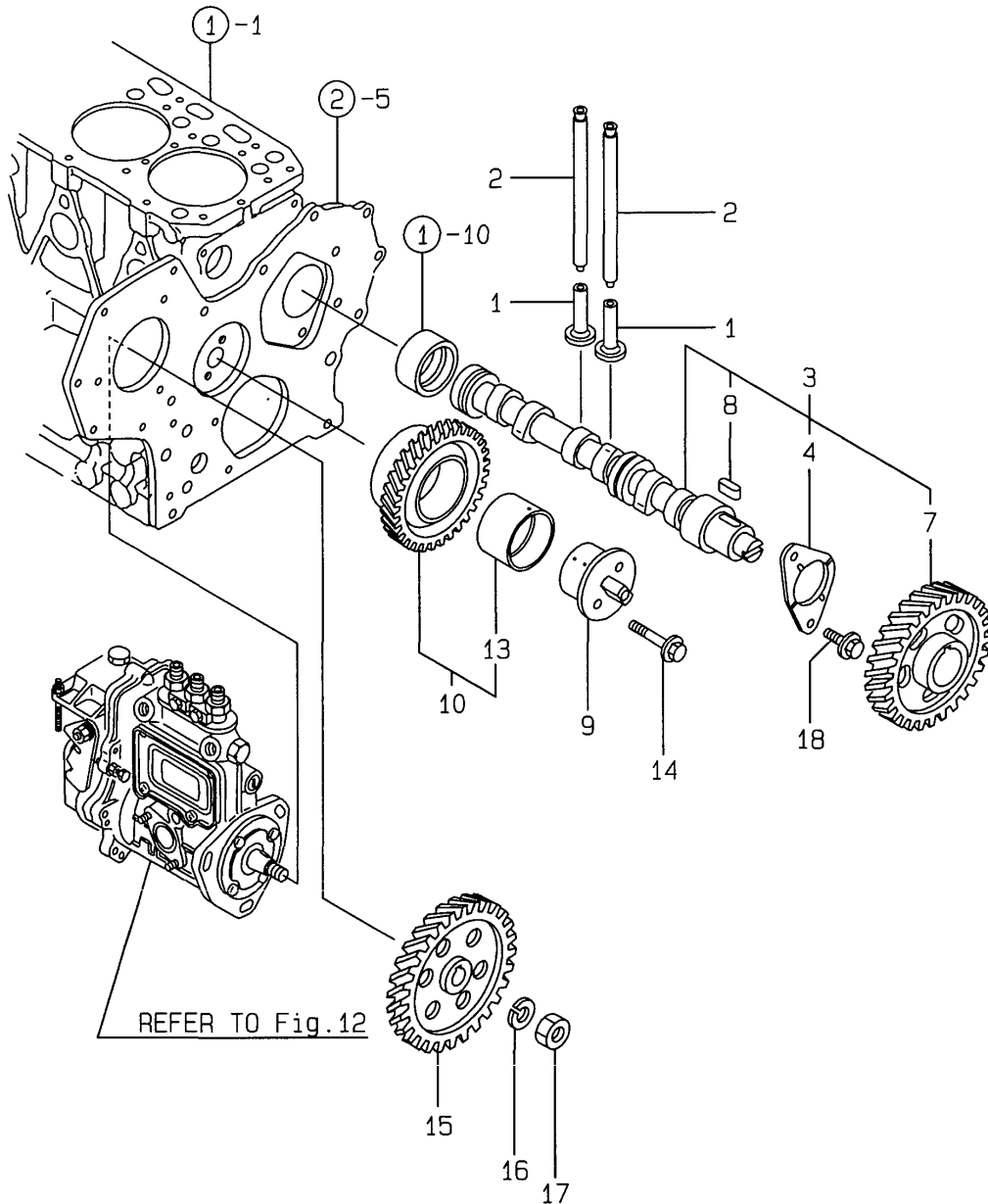
(D)=
(E)=
(F)=

REF.	LEV.	PARTS NO.	DESCRIPTION	QTY						I	R
				(A)	(B)	(C)	(D)	(E)	(F)		
1	1	129001-13100	MANIFOLD,EXHAUST	1	1	1					
2	1	129001-13110	GASKET, EXH.MANIFOLD	1	1	1					
3	1	194990-22050	NUT W/WASHER 8	2	2	2					
I	3-1	1 26306-080002	NUT	2	2	2					N
		(A=E00780) (B=E06773) (C=E00168)									
4	1	26106-080402	BOLT M 8X 40 PLATED	4	4	4					
5	1	26216-080222	STUD M 8X 22 PLATED	4	4	4					
I	5-1	1 119131-18320	BOLT M 8X 22	4	4	4					N
		(A=E06780) (B=E06773) (C=E00168)									
6	1	26216-080402	STUD M 8X 40 PLATED	2	2	2					
7	1	121000-13201	GASKET, SILENCER	1	1	1					
8	1	119620-13501	SILENCER	1	1	1					
9	2	119620-13510	MUFFLER BODY ASSY	1	1	1					
10	2	119620-13520	TAILPIPE ASSY	1	1	1					
11	3	119620-13560	TAILPIPE	1	1	1					
12	3	124664-13580	CLAMP	1	1	1					
13	3	119358-13640	RAINCAP,MUFFLER	1	1	1					
14	3	121855-13821	SPACER(A)	1	1	1					
15	3	121855-13830	SPACER(B)	2	2	2					
16	3	123500-13840	SPACER(C)	1	1	1					
17	3	26106-080552	BOLT M 8X 55 PLATED	1	1	1					
18	3	26347-040002	U-NUT M 4	1	1	1					
19	3	26347-060002	U-NUT M 6	1	1	1					
20	3	26366-080002	NUT M 8	1	1	1					
I	20-1	3 26306-080002	NUT	1	1	1					N
		(A=E00780) (B=E06773) (C=E00168)									
21	3	26557-040352	SCREW M 4X 35	1	1	1					
22	3	26106-060402	BOLT M 6X 40 PLATED	1	1	1					
23	1	194990-22050	NUT W/WASHER 8	4	4	4					
I	23-1	1 26306-080002	NUT	4	4	4					N
		(A=E00780) (B=E06773) (C=E00168)									
24	1	124701-11911	GASKET, (NON-ASB.)	1	1	1					1

Remarks
(1) LOOSE PART.

Fig.7. CAMSHAFT & DRIVING GEAR

7. CAMSHAFT & DRIVING GEAR



OCR10-G45401 7. CAMSHAFT & DRIVING GEAR

(A)=3TNE88-SA
(B)=3TNE88-G1A
(C)=3TNE88C-G1A

(D)=
(E)=
(F)=

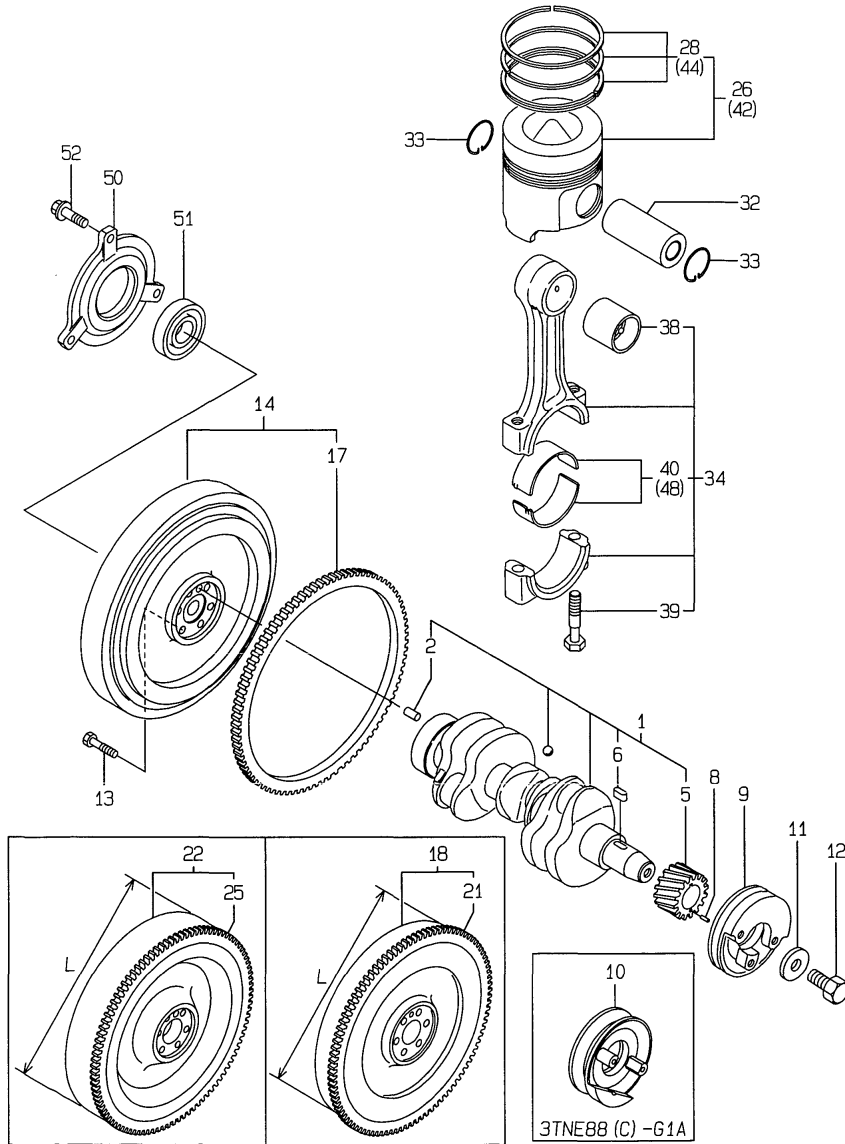
REF.	LEV.	PARTS NO.	DESCRIPTION	QTY						I	R
				(A)	(B)	(C)	(D)	(E)	(F)		
1	1	129150-14200	TAPPET	6	6	6					
2	1	129150-14400	ROD, PUSH	6	6	6					
3	1	129129-14580	CAMSHAFT ASSY	1	1	1					
4	2	129150-02450	METAL,THRUST(CAM	1	1	1					
7	2	129150-14101	GEAR, CAMSHAFT	1	1	1					
8	2	22512-070140	KEY 7X 14	1	1	1					
9	1	129100-25061	SHAFT, IDLE GEAR	1	1	1					
10	1	129150-25101	GEAR W/BUSH	1	1	1					
13	2	129150-25920	BUSH, IDLE GEAR	1	1	1					1
14	1	26106-080452	BOLT M 8X 45 PLATED	2	2	2					
15	1	129150-25900	GEAR, FUEL INJ. PUMP	1	1	1					
16	1	22217-120000	SPRING WASHER 12	1	1	1					
17	1	26716-120002	NUT 12	1	1	1					
18	1	26106-080162	BOLT M 8X 16 PLATED	2	2	2					
I 18-1	1	26106-080142	BOLT 8X 14 PLATED	2	2	2					N

(A)=E05144) (B)=E05429) (C)=E00113)

Remarks
(1) REPAIR PART.

Fig.8. CRANKSHAFT & PISTON

8.CRANKSHAFT & PISTON



Remarks
 (1) L= 335M/M.
 (2) L= 300M/M.
 (3) REPAIR PART.
 (4) OVER-SIZE(O.S=0.25)PART.
 (5) UNDER-SIZE(U.S=0.25)PART.

OCR10-G45401 8. CRANKSHAFT & PISTON

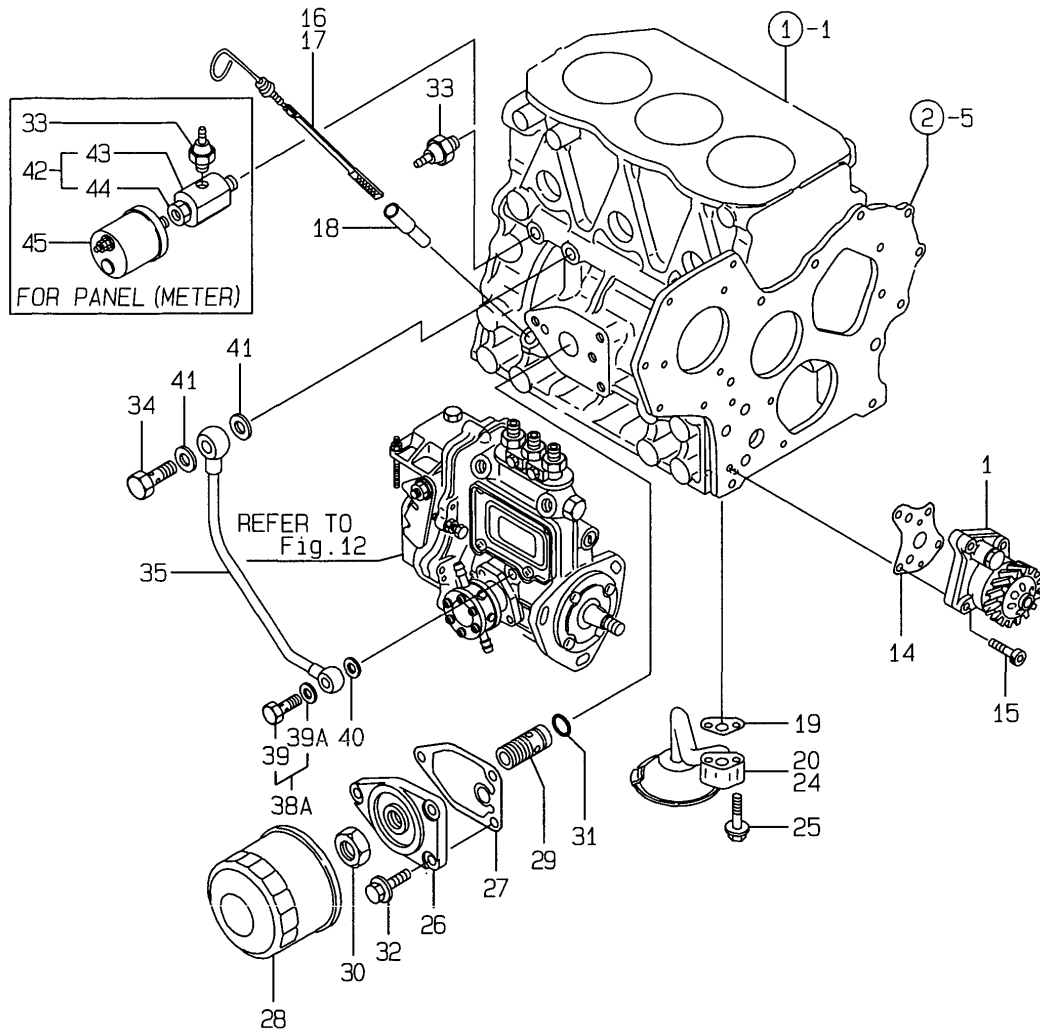
(A)=3TNE88-SA
 (B)=3TNE88-G1A
 (C)=3TNE88C-G1A

(D)=
 (E)=
 (F)=

REF.	LEV.	PARTS NO.	DESCRIPTION	QTY						I	R
				(A)	(B)	(C)	(D)	(E)	(F)		
1	1	129001-21000	CRANKSHAFT ASSY	1	1	1					
2	2	129100-01580	PARALLEL PIN 8X16	1	1	1					
5	2	129150-21200	GEAR, CRANKSHAFT	1	1	1					
6	2	22512-070140	KEY 7X 14	1	1	1					
8	1	22351-040010	SPRING PIN 4X10	1	1	1					
9	1	171340-21650	V-PULLEY, CRANKSHAFT	1							
10	1	129150-21650	V-PULLEY		1	1					
11	1	129795-21661	WASHER	1	1	1					
12	1	121850-21680	BOLT, V-PULLEY	1	1	1					
13	1	121111-21501	BOLT, FLYWHEEL	6	6	6					
14	1	129188-21590	FLYWHEEL W/RING GEAR	1							
17	2	119865-21600	GEAR, RING	1							
18	1	171340-21590	FLYWHEEL W/RING GEAR	1	1	1					1
21	2	124550-21600	RING GEAR	1	1	1					
22	1	171340-21580	FLYWHEEL W/RING GEAR	1							2
25	2	119865-21600	GEAR, RING	1							
26	1	129001-22081	PISTON W/RINGS	3	3	3					
28	2	129001-22500	RING SET, PISTON	3	3	3					
32	1	129202-22300	PIN, PISTON(D26,L70)	3	3	3					
33	1	22252-000260	CIRCLIP 26	6	6	6					
34	1	729402-23100	ROD ASSY, CONNECTING	3	3	3					
38	2	129100-23910	BUSH, PISTON PIN	3	3	3					3
39	2	121550-23200	BOLT, CONNECTING ROD	6	6	6					
40	2	129150-23600	METAL, CRANKPIN	3	3	3					
42	1	129001-22900	PISTON W/RING OS=.25	3	3	3					4
44	2	129001-22950	RING SET O.S=0.25	3	3	3					4
48	1	129150-23610	METAL.PIN US=0.25	3	3	3					5
50	1	119888-21450	RETAINER, BEARING	1							
51	1	24107-062054	BALL BEARING	1							
52	1	26106-080222	BOLT M 8X 22 PLATED	3							

Fig.9. LUB.OIL SYSTEM

9.LUB.OIL SYSTEM



(A)=3TNE88-SA
(B)=3TNE88-G1A
(C)=3TNE88C-G1A

(D)=
(E)=
(F)=

REF.	LEV.	PARTS NO.	DESCRIPTION	QTY						I	R
				(A)	(B)	(C)	(D)	(E)	(F)		
1	1	129001-32001	PUMP ASSY, LUB. OIL	1	1	1					
14	1	129150-32020	GASKET, L.O. PUMP	1	1	1					
15	1	26450-060252	BOLT M 6X 25	4	4	4					
16	1	171420-34800	DIPSTICK	1							
17	1	171420-34820	DIPSTICK, LUB. OIL		1						
I 17-1	1	129136-34800	DIPSTICK, LUB. OIL		1	1					N
(B=E04211)											
18	1	121520-34810	GUIDE, DIPSTICK	1	1	1					
19	1	129150-35041	GASKET, (NON-ASB.)	1	1	1					
20	1	129150-35091	PIPE ASSY, OIL INLET	1							
24	1	129100-35301	PIPE ASSY, OIL INLET		1	1					
25	1	26106-080352	BOLT M 8X 35 PLATED	2	2	2					
26	1	129150-35101	BRACKET, STRAINER	1	1	1					
27	1	129150-35111	GASKET, (NON-ASB.)	1	1	1					
28	1	129150-35151	FILTER 80X80L	1	1	1					
29	1	129001-35300	BOLT,LUB.O. STRAINER	1	1	1					
30	1	129150-35350	NUT	1	1	1					
31	1	24311-000160	O-RING 1A P-16.0	1	1	1					
32	1	26106-080202	BOLT M 8X 20 PLATED	3	3	3					
33	1	124160-39450	SWITCH, OIL PRESSURE	1	1	1					
34	1	124160-39140	BOLT 10, PIPE JOINT	1	1	1					
35	1	129150-39450	PIPE ASSY, LUB. OIL	1	1	1					
I 38A	1	124550-59830	BOLT W/ SEAL WASHER	1	1	1					W
(A=E05144) (B=E05425) (C=E00119)											
I 39	2	124550-59820	BOLT 8, PIPE JOINT	1	1	1					
I 39A	2	22190-080002	SEAL WASHER 8S	1	1	1					W
(A=E05144) (B=E05425) (C=E00119)											
40	1	23414-080000	GASKET 8, ROUND	2	2	2					
I 40-1	1	22190-080002	SEAL WASHER 8S	1	1	1					N
(A=E05144) (B=E05425) (C=E00119)											
41	1	23414-100000	GASKET 10, ROUND	2	2	2					
42	1	171375-39600	DAMPER ASSY	1	1	1					1
I 42-1	1	171375-39601	DUMPER ASSY	1	1	1					R 1
(A=E05144) (B=E05425) (C=E00119)											
I 43	2	129470-39610	DAMPER	1	1	1					Z 1
(A=E05144) (B=E05425) (C=E00119)											
I 44	2	23161-020100	BUSH PT1/4X1/8	1	1	1					Z 1
(A=E05144) (B=E05425) (C=E00119)											
45	1	144626-91560	SENDER UNIT	1	1	1					1

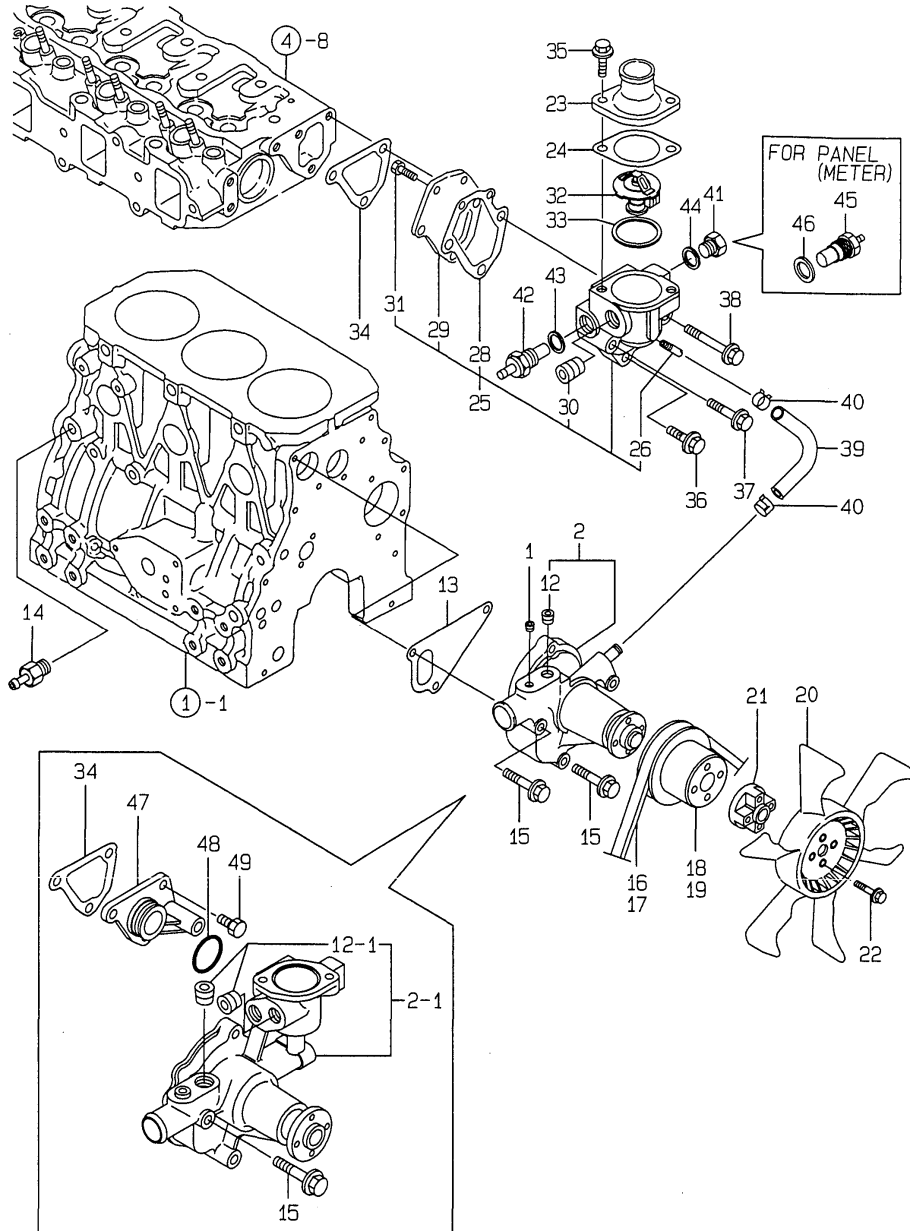
Remarks
(1) FOR PANEL(METER).

Fig.10. COOLING WATER SYSTEM

(A)=3TNE88-SA
(B)=3TNE88-G1A
(C)=3TNE88C-G1A

(D)=
(E)=
(F)=

10.COOLING WATER SYSTEM



REF.	LEV.	PARTS NO.	DESCRIPTION	QTY						I	R
				(A)	(B)	(C)	(D)	(E)	(F)		
I	1	121850-11860	PLUG PT1/4	1	1						Z
	2	129100-42002	PUMP,C.W.(NON-ASB.)	1	1						
I	2-1	129001-42001	PUMP,C.W.(NON-ASB.)	1	1	1					N
I	2-2	(A=E06934) (B=E06929) 129001-42002	PUMP ASSY, C.WATER	1	1	1					N
		(A=E05256) (B=E05429) (C=E00126)									
	12	23871-030000	PLUG PT3/8,SCREW	1	1						
I	12-1	23871-030000	PLUG PT3/8,SCREW	2	2	2					K
		(A=E06934) (B=E06929)									
I	12-2	23876-030000	PLUG PT3/8,SCREW	2	2	2					N
		(A=E06934) (B=E06929)									
	13	129100-42020	GASKET, C.W. PUMP	1	1	1					
	14	121550-49111	JOINT PT1/4	1	1	1					
	15	26106-080602	BOLT M 8X 60 PLATED	3	3	3					
	16	25132-003800	V-BELT A-38	1	1						
	17	25132-003700	V-BELT A37		1						
I	17-1	25132-003800	V-BELT A-38		1						N
		(B=E06934) (B=E06929)									
	18	129403-42380	V-PULLEY(D=110)	1							
	19	129155-42350	V-PULLEY, C.W. PUMP		1	1					
	20	171340-44740	FAN, COOLING	1	1	1					
	21	171353-44760	SPACER	1	1	1					
	22	26106-060352	BOLT M 6X 35 PLATED	4	4	4					
	23	129350-49530	COVER, THERMOSTAT	1	1						
I	23-1	129350-49560	COVER, THERMOSTAT	1	1	1					N
		(A=E06934) (B=E06929)									
	24	129795-49551	GASKET, (NON-ASB.)	1	1	1					
I	25	129100-49800	CASE ASSY,THERMOSTAT	1	1						Z
		(A=E06934) (B=E06929)									
I	26	124770-11770	JOINT PT1/8	1	1						Z
		(A=E06934) (B=E06929)									
I	28	129100-49820	GASKET, COVER	1	1						Z
		(A=E06934) (B=E06929)									
I	29	129100-49830	COVER,THERMOST.CASE	1	1						Z
		(A=E06934) (B=E06929)									
I	30	23871-030000	PLUG PT3/8,SCREW	1	1						Z
		(A=E06934) (B=E06929)									
I	31	26116-060162	BOLT 6X16	2	2						Z
		(A=E06934) (B=E06929)									
	32	129155-49800	THERMOSTAT	1	1	1					
	33	129150-49811	GASKET, (NON-ASB.)	1	1	1					
	34	129100-49840	GASKET, THERMO. CASE	1	1	1					
	35	26106-080202	BOLT M 8X 20 PLATED	2	2	2					
I	36	26106-080252	BOLT M 8X 25 PLATED	1	1						Z
		(A=E06934) (B=E06929)									
I	37	26106-080502	BOLT M 8X 50 PLATED	1	1						Z
		(A=E06934) (B=E06929)									
I	38	26106-080602	BOLT M 8X 60 PLATED	1	1						Z
		(A=E06934) (B=E06929)									
I	39	129132-49050	PIPE, COOLING WATER	1	1						Z
		(A=E06934) (B=E06929)									

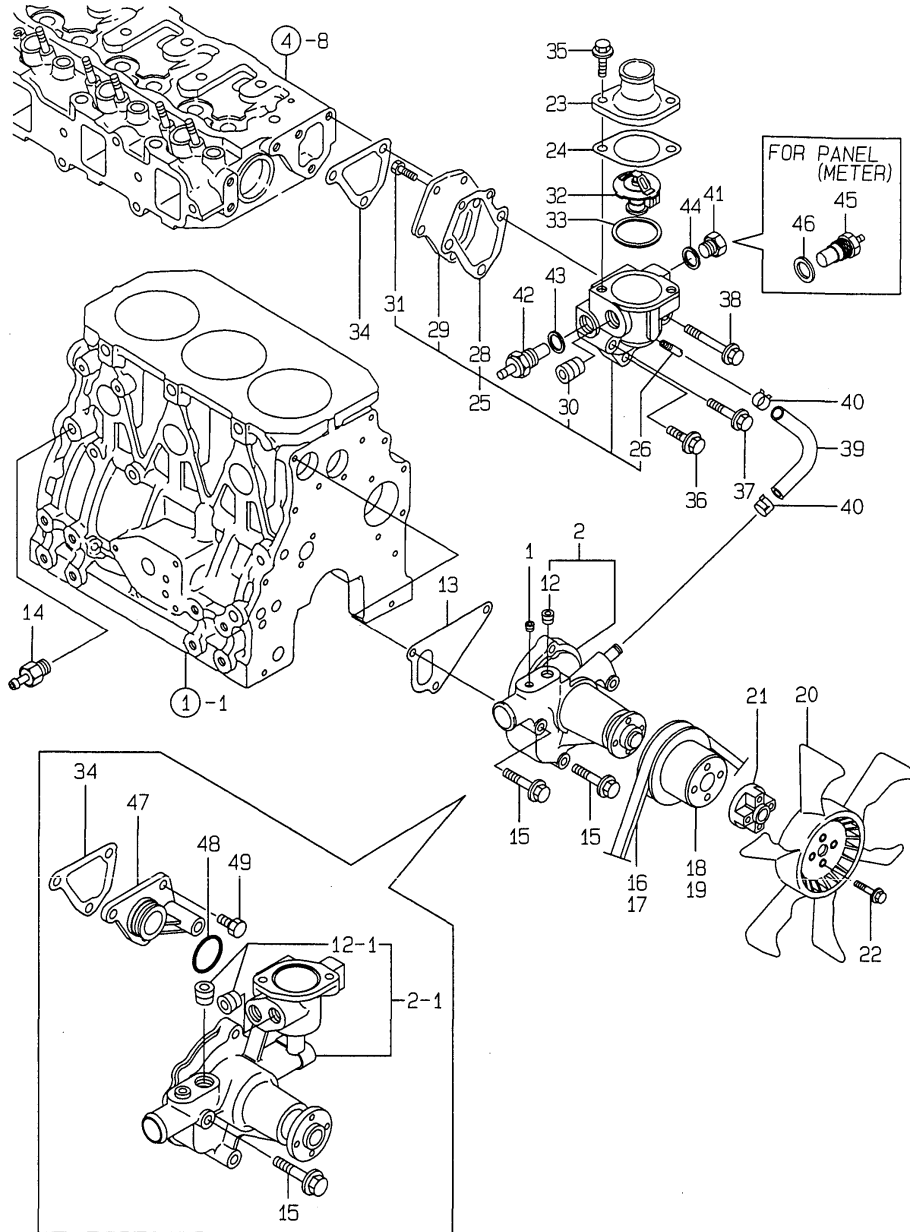
Remarks
(1) FOR PANEL(METER).

Fig.10. COOLING WATER SYSTEM

(A)=3TNE88-SA
 (B)=3TNE88-G1A
 (C)=3TNE88C-G1A

(D)=
 (E)=
 (F)=

10.COOLING WATER SYSTEM

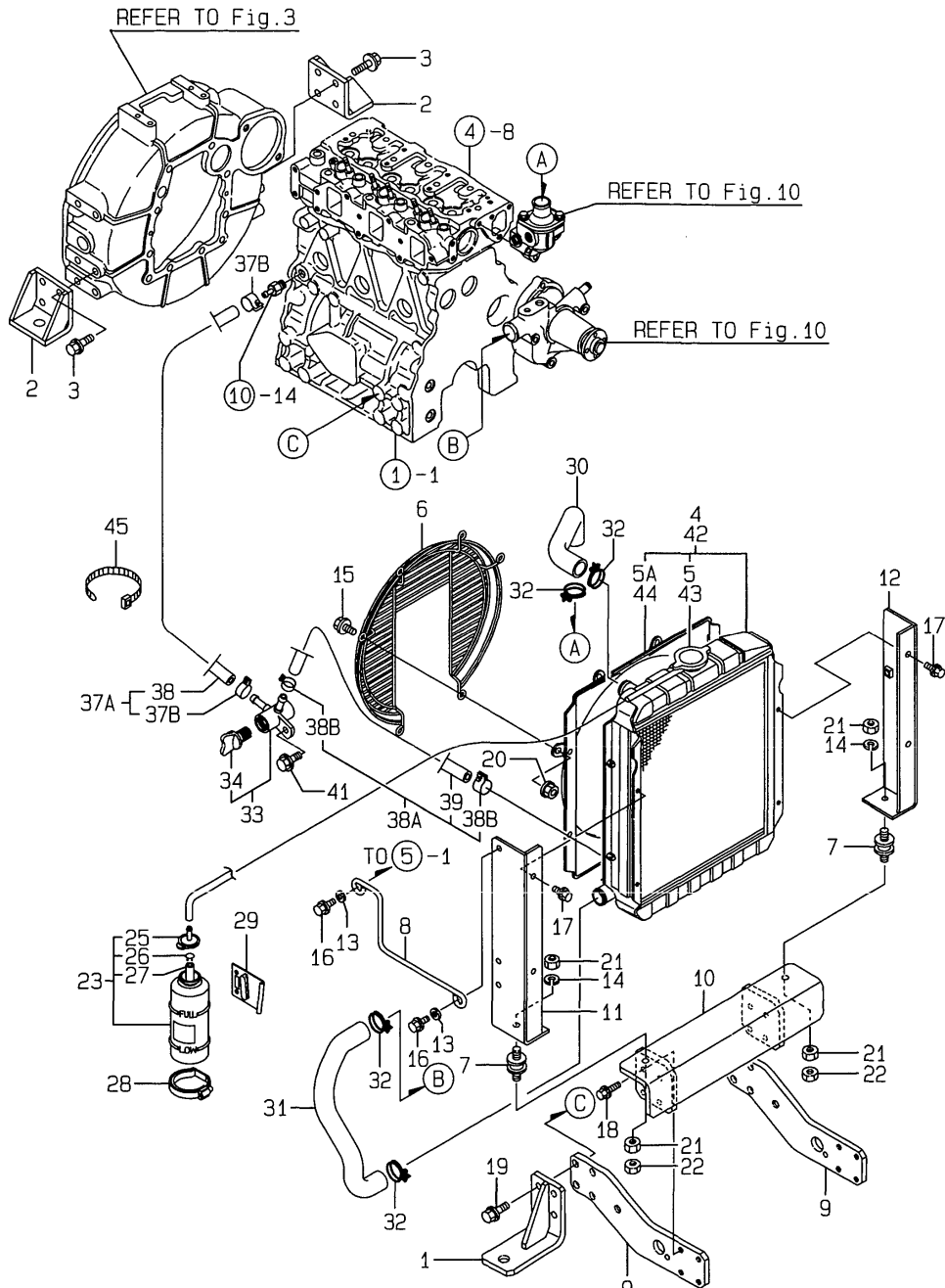


REF.	LEV.	PARTS NO.	DESCRIPTION	QTY						I	R
				(A)	(B)	(C)	(D)	(E)	(F)		
I	40	1	23000-016000 CLAMP 16 (A=E06934) (B=E06929)	2	2						Z
	41	1	121450-42450 PLUG M16	1	1	1					
	42	1	121250-44901 SWITCH, THERMO(110 C)	1	1	1					
	43	1	124465-44950 GASKET 16	1	1	1					
	44	1	124465-44950 GASKET 16	1	1	1					
	45	1	124250-49351 THERMOMETER	1	1	1					1
	46	1	129150-49360 GASKET 10	1	1	1					1
I	47	1	129001-42040 JOINT (A=E06934) (B=E06929)	1	1	1					W
I	48	1	24321-000300 O-RING G30 (A=E06934) (B=E06929)	1	1	1					W
I	49	1	26106-080182 BOLT M 8X 18 PLATED (A=E06934) (B=E06929)	3	3	3					W
I	49-1	1	26106-080162 BOLT M 8X 16 PLATED (A=E06934) (B=E06929)	3	3	3					N

Remarks
 (1) FOR PANEL(METER).

Fig.11. RADIATOR

11. RADIATOR



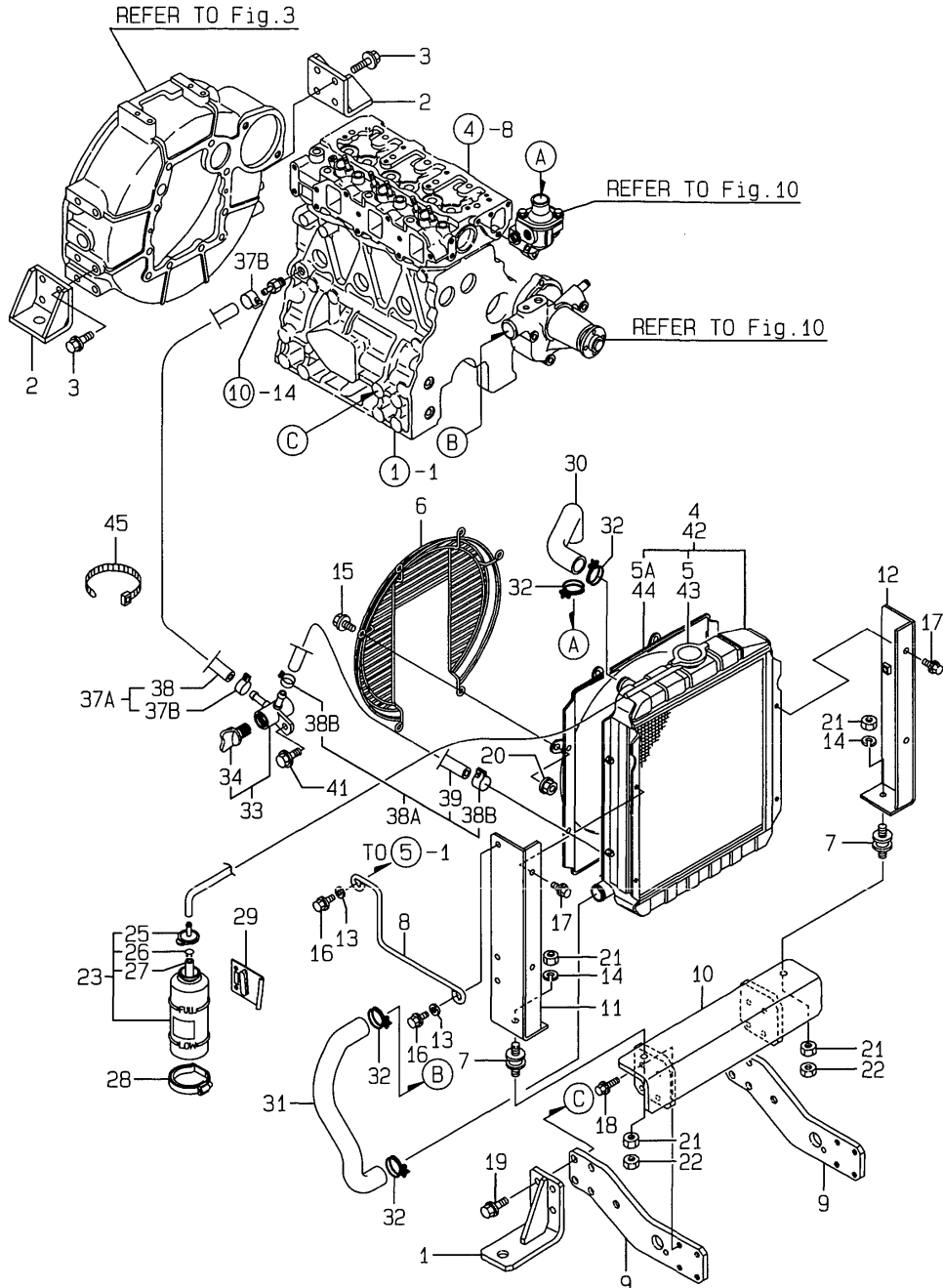
(A)=3TNE88-SA
(B)=3TNE88-G1A
(C)=3TNE88C-G1A

(D)=
(E)=
(F)=

REF.	LEV.	PARTS NO.	DESCRIPTION	QTY						I	R
				(A)	(B)	(C)	(D)	(E)	(F)		
1	1	129188-08100	BRACKET (A), ENGINE	2	2	2					
2	1	119888-08110	BRACKET (B), ENGINE	2	2	2					
3	1	26106-100202	BOLT M10X 20 PLATED	8	8	8					
4	1	129120-44500	RADIATOR	1							
I 5	2	119259-44570	CAP, RADIATOR	1							
I 5A	2	X2411367340	SHROUD	1							W
(A=EXXX)											
6	1	129120-44560	PROTECTOR, FAN	1	1	1					
7	1	121400-44650	ABSORBER, SHOCK	2	2	2					
8	1	129211-44940	SUPPORT,RADIATOR	1	1	1					
9	1	129188-44950	BRACKET (A)	2	2	2					
10	1	129188-44960	BRACKET (B),RADIATOR	1	1	1					
11	1	129188-44970	SUPPORT (A)	1	1	1					
12	1	129188-44980	SUPPORT (B)	1	1	1					
13	1	22137-080000	WASHER 8, POLISHED	2	2	2					
14	1	22217-100000	SPRING WASHER 10	2	2	2					
15	1	26106-080122	BOLT M 8X 12 PLATED	6	6	6					
16	1	26106-080162	BOLT M 8X 16 PLATED	2	2	2					
17	1	26106-080202	BOLT M 8X 20 PLATED	4	4	4					
18	1	26106-080252	BOLT M 8X 25 PLATED	8	8	8					
19	1	26106-100302	BOLT M10X 30 PLATED	8	8	8					
20	1	26366-080002	NUT M 8	6	6	6					
I 20-1	1	26306-080002	NUT	6	6	6					N
(A=EXXX) (B=EXXX) (C=EXXX)											
21	1	26716-100002	NUT 10	4	4	4					
22	1	26756-100002	LOCK NUT M10 PLATED	2	2	2					
23	1	124450-44510	SUB-TANK ASSY	1	1	1					
25	2	124450-44530	CAP	1	1	1					
26	2	124450-44560	CLAMP	1	1	1					
27	2	23061-070230	PIPE 7X 230	1	1	1					
28	1	124450-44550	CLAMP, SUB-TANK	1	1	1					
29	1	121256-44600	BRACKET, SUB-TANK	1	1	1					
30	1	171301-49010	PIPE (A), C. WATER	1	1	1					
31	1	171301-49020	PIPE (B), C. WATER	1	1						
I 31-1	1	129211-49020	PIPE (B), C. WATER	1	1	1					N
(A=E06934) (B=E06929)											
32	1	23010-038000	CLAMP 38	4	4	4					
33	1	129150-49100	COCK ASSY, 3-WAY	1	1	1					
34	2	129150-49080	COCK, DRAIN	1	1	1					
I 37A	1	129210-49280	PIPE, WATER DRAIN	1	1	1					W
(A=EXXX) (B=EXXX) (C=EXXX)											
I 37B	2	124766-59050	CLAMP 12	2	2	2					W
(A=EXXX) (B=EXXX) (C=EXXX)											
I 38	2	121737-49160	PIPE, WATER DRAIN	1	1	1					
I 38-1	2	121737-49150	PIPE, WATER DRAIN	1	1	1					N
(A=EXXX) (B=EXXX) (C=EXXX)											
I 38A	1	129210-49120	PIPE, WATER DRAIN	1	1	1					W
(A=EXXX) (B=EXXX) (C=EXXX)											
I 38B	2	124766-59050	CLAMP 12	2	2	2					W
(A=EXXX) (B=EXXX) (C=EXXX)											
I 39	2	121520-49160	PIPE, WATER DRAIN	1	1	1					

Fig.11. RADIATOR

11. RADIATOR



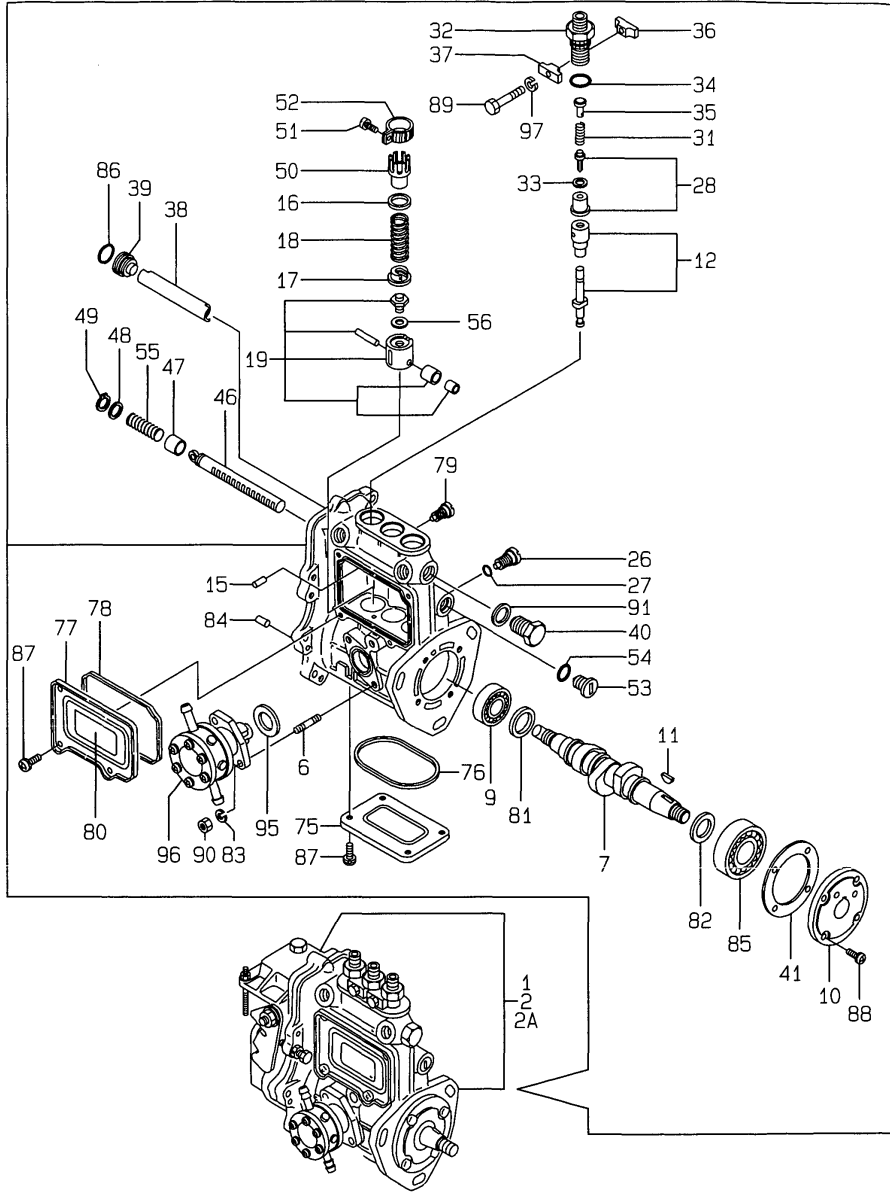
(A)=3TNE88-SA
(B)=3TNE88-G1A
(C)=3TNE88C-G1A

(D)=
(E)=
(F)=

REF.	LEV.	PARTS NO.	DESCRIPTION	QTY						I	R	
				(A)	(B)	(C)	(D)	(E)	(F)			
I	39-1	2 (A=EXXX)	121025-49150 (B=EXXX) (C=EXXX)	PIPE, C.W. DRAIN	1	1	1					N
	41	1	26106-080162	BOLT M 8X 16 PLATED	1	1	1					
	42	1	129420-44510	RADIATOR		1	1					
I	43	2	119259-44570	CAP, RADIATOR		1	1					
I	44	2	X2411367340 (B=EXXX)	SHROUD		1	1					W
I	45	1 (A=EXXX)	121750-59890 (B=EXXX) (C=EXXX)	CLAMP 140	1	1	1					W

Fig.12. FUEL INJECTION PUMP

12.FUEL INJECTION PUMP



Remarks
 (1)GOVERNOR ASSY(FIG.13)IS
 INCORPORATED IN THIS FUEL
 INJECTION PUMP ASSY(REF.NO.1,2,2A)

(A)=3TNE88-SA
 (B)=3TNE88-G1A
 (C)=3TNE88C-G1A

(D)=
 (E)=
 (F)=

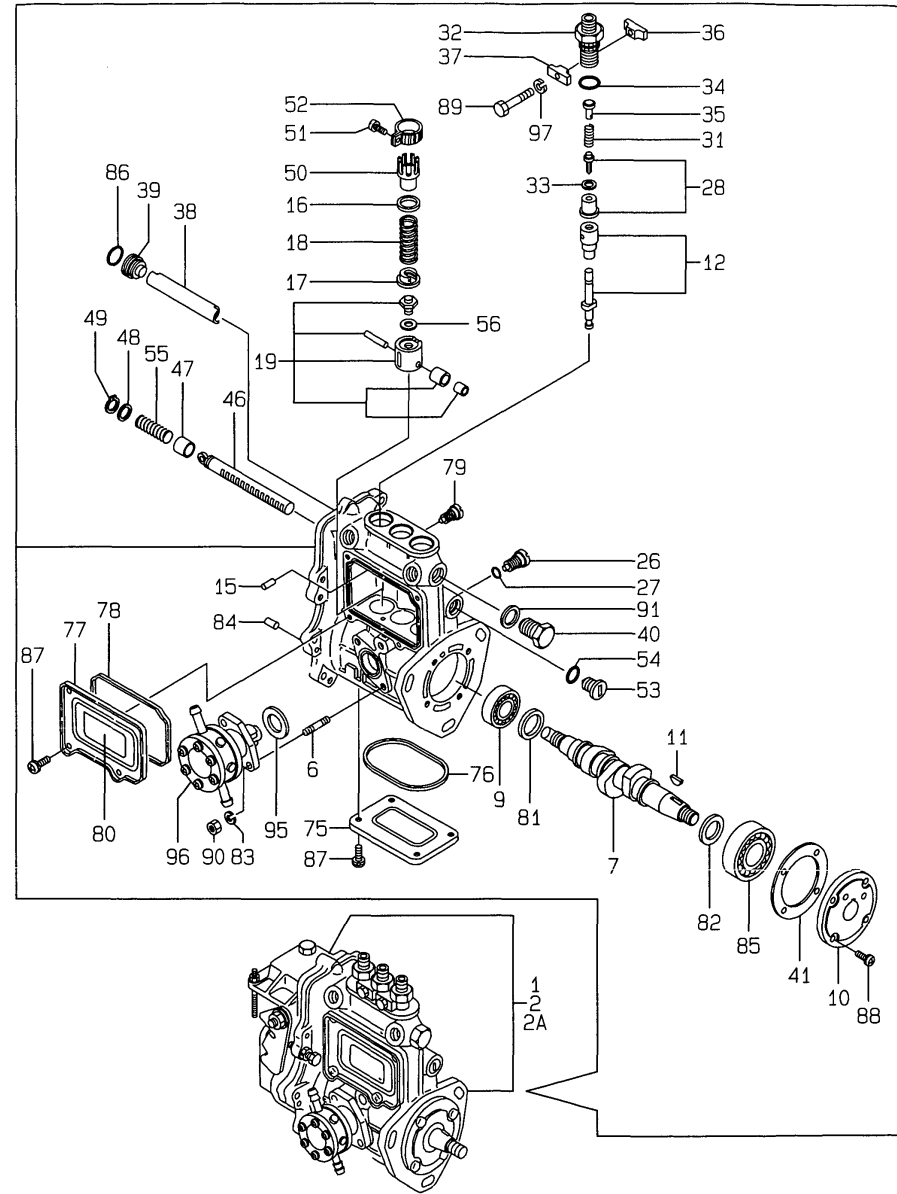
REF.	LEV.	PARTS NO.	DESCRIPTION	QTY						I	R
				(A)	(B)	(C)	(D)	(E)	(F)		
1	1	729209-51350	PUMP ASSY, F. INJEC.	1							1
2	1	729209-51300	FUEL INJECTION PUMP		1						1
I	2A	1	729209-51310	PUMP ASSY, F.INJECT			1				1
6	2	129155-51020	STUD, FEED PUMP	2	2	2					
7	2	119810-51040	CAMSHAFT	1	1	1					
9	2	129155-51050	BALL BEARING, THRUST	1	1	1					
10	2	129155-51060	CAM SHAFT SUPPORT	1	1	1					
11	2	122710-51090	KEY	1	1	1					
12	2	129506-51100	PLUNGER W/BARREL	3	3	3					
I	12-1	2	129470-51101	PLUNGER W/BARREL	3						N
		(A=E05593)									
15	2	129155-51140	PIN, BARREL LOCKING	3	3	3					
16	2	174307-51170	RETAINER A	3	3	3					
17	2	129155-51180	SPRING SHOE, PLUNGER	3	3	3					
18	2	124950-51190	SPRING, PLUNGER	3	3	3					
19	2	129155-51200	TAPPET ASSY	3	3	3					
26	2	129155-51270	LOCKING, TAPPET	3	3	3					
27	2	129155-51280	O-RING S6	3	3	3					
28	2	129100-51300	VALVE W/SEAT, DELIV.	3	3	3					
31	2	129155-51320	SPRING, DELIV. VALVE	3	3	3					
32	2	129155-51340	GUARD,DELIVERY VALVE	3	3	3					
33	2	124550-51350	GASKET, DELIVERY	3	3	3					
34	2	124550-51370	O-RING, DELIVERY	3	3	3					
35	2	129155-51370	STOPPER, VALVE	3	3	3					
36	2	129155-51380	LOCKING (A)	2	2	2					
37	2	129155-51390	LOCKING (B)	2	2	2					
38	2	129155-51400	DEFLECTOR	1	1	1					
39	2	129155-51410	CHECK BOLT,DEFLECTOR	1	1	1					
40	2	129155-51420	PLUG (M16)	1	1	1					
41	2	129155-51450	SHIM SET, ADJUSTING	1	1	1					
46	2	129155-51500	RACK, CONTROL	1	1	1					
47	2	129155-51521	BUSH, RACK	1	1	1					
48	2	129155-51530	SPACER, AUX. SPRING	1	1	1					
49	2	129155-51540	CIRCLIP	1	1	1					
50	2	129155-51550	PINION, CONTROL	3	3	3					
51	2	122117-51560	SCREW, PINION	3	3	3					
52	2	174307-51560	PINION	3	3	3					
53	2	129155-51570	PLUG (M12)	1	1	1					
54	2	129155-51580	O-RING	1	1	1					
55	2	129155-51591	SPRING, RACK	1	1	1					
56	2	129155-51600	SHIM PACK	3	3	3					
75	2	129155-51700	COVER, LOWER	1	1	1					
76	2	129155-51710	GASKET, LOWER COVER	1	1	1					
77	2	129155-51750	COVER, SIDE	1	1	1					
78	2	129155-51760	GASKET, SIDE COVER	1	1	1					
79	2	129155-51790	LOCKING, RACK	1	1	1					
80	2	129156-51910	LABEL, CAUTION	1	1	1					
81	2	129155-51930	SPACER T=3.25	1	1	1					
82	2	129155-51940	SPACER T=1.5	1	1	1					
83	2	22217-060000	SPRING WASHER 6	2	2	2					
84	2	22351-050010	SPRING PIN 5X10	2	2	2					

Fig.12. FUEL INJECTION PUMP

(A)=3TNE88-SA
(B)=3TNE88-G1A
(C)=3TNE88C-G1A

(D)=
(E)=
(F)=

12.FUEL INJECTION PUMP

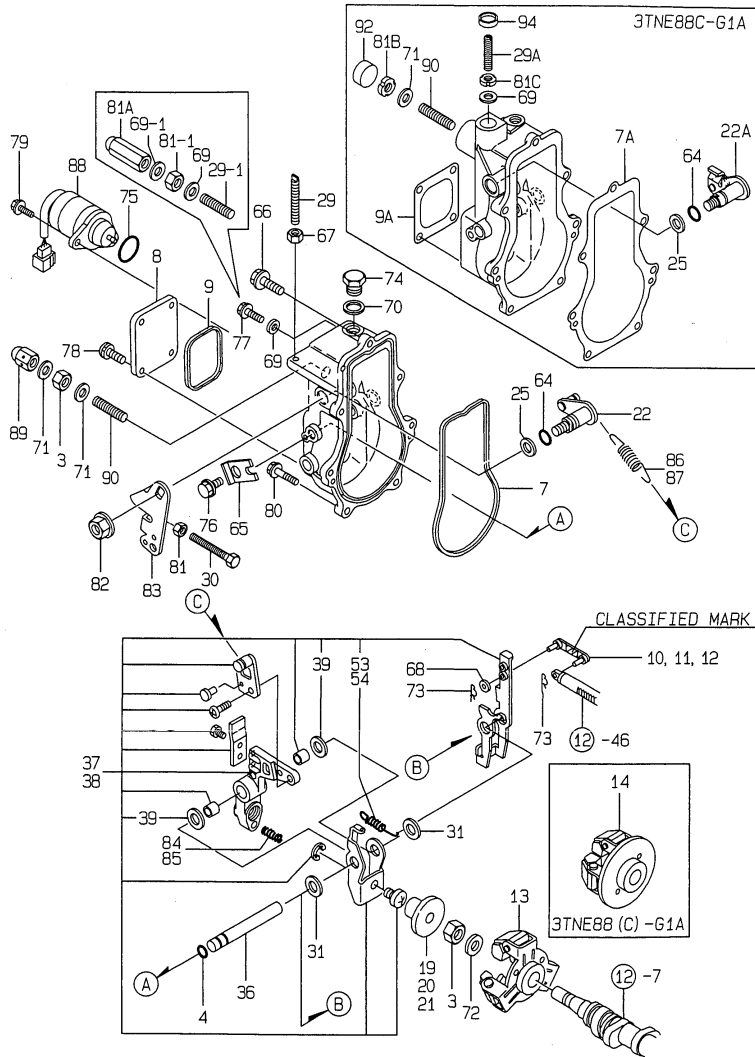


REF.	LEV.	PARTS NO.	DESCRIPTION	QTY						I	R
				(A)	(B)	(C)	(D)	(E)	(F)		
85	2	24101-063034	BALL BEARING	1	1	1					
86	2	24341-000160	O-RING 1A S-16.0	1	1	1					
87	2	26022-050102	SCREW M 5X 10	8	8	8					
88	2	26022-060162	SCREW M 6X 16	4	4	4					
89	2	26116-050302	BOLT M 5X 30 PLATED	2	2	2					
90	2	26716-060002	NUT 6	2	2	2					
91	2	22190-160002	SEAL WASHER 16S	1	1	1					
95	2	129155-52050	GASKET	1	1	1					
96	2	129100-52100	PUMP ASSY, FUEL FEED	1	1	1					
97	2	22217-050000	SPRING WASHER 5	2	2	2					

Remarks
(1)GOVERNOR ASSY(FIG.13)IS
INCORPORATED IN THIS FUEL
INJECTION PUMP ASSY(REF.NO.1,2,2A)

Fig.13. GOVERNOR

13. GOVERNOR



Remarks

- (1) SELECTIVE PARTS: CERTAIN THE CLASSIFICATION MARK, THEN PLACE YOUR ORDER.(REFER TO ILLUSTRATION).
- (2) SELECTIVE PARTS.
* THIS FIGURE(GOVERNOR ASSY) IS INCORPORATED IN THE FUEL INJECTION PUMP ASSY(FIG.12).
- (3) REPAIR PART.

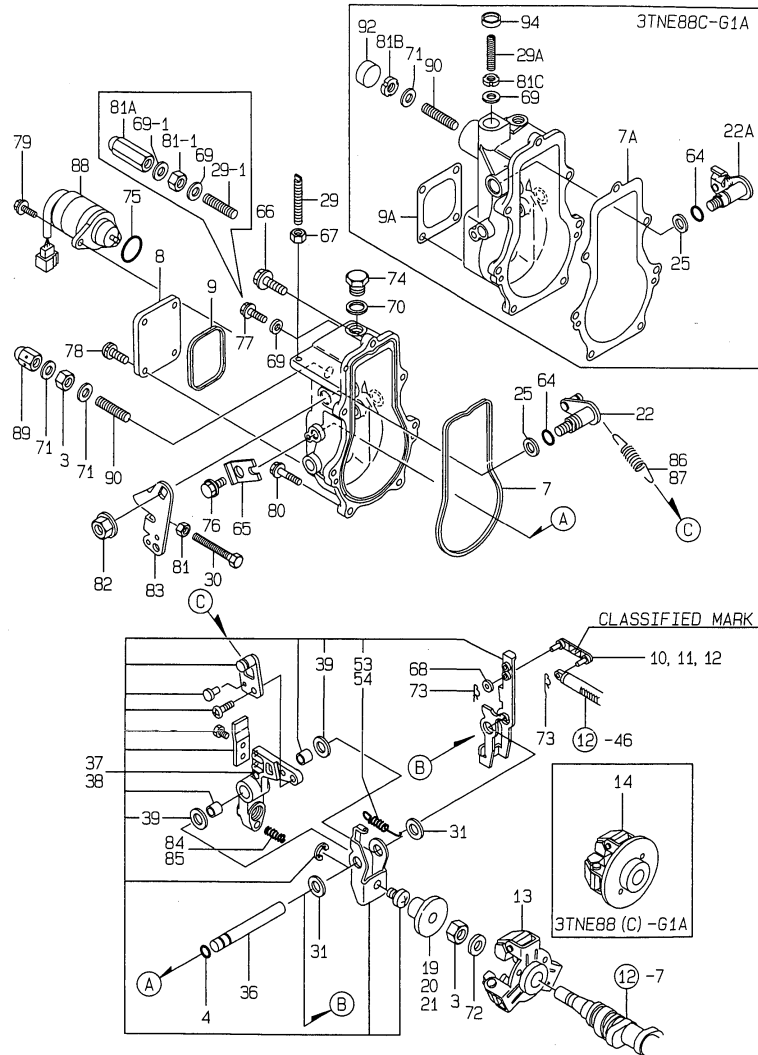
(A)=3TNE88-SA
(B)=3TNE88-G1A
(C)=3TNE88C-G1A

(D)=
(E)=
(F)=

REF.	LEV.	PARTS NO.	DESCRIPTION	QTY						I	R
				(A)	(B)	(C)	(D)	(E)	(F)		
3	2	26776-120002	LOCK NUT M12 PLATED	2	2	1					
4	2	129155-51280	O-RING S6	1	1	1					
7	2	129052-61050	PACKING	1	1						
7A	2	129116-61051	GASKET, SPACER			1					
8	2	129052-61060	COVER	1	1	1					
9	2	129052-61070	PACKING	1	1						
9A	2	119988-61070	PACKING			1					
10	2	129155-61120	LINK L=30(MARK 0)	1	1	1					1
11	2	129155-61130	LINK L=31(MARK 1)	1	1	1					1
12	2	129155-61140	LINK L=30.5(MARK 05)	1	1	1					1
13	2	129155-61201	WEIGHT ASSY, GOV.	1							
14	2	171488-61200	WEIGHT ASSY, GOV.		1	1					
19	2	129155-61341	SLEEVE(L=25.5)	1	1	1					2
20	2	129155-61350	SLEEVE(L=24.9)	1	1	1					2
21	2	129155-61360	SLEEVE(L=25.2)	1	1	1					2
22	2	129100-61400	SHAFT ASSY, CONTROL	1	1						
22A	2	119988-61400	SHAFT ASSY,CONTROL			1					
25	2	129155-61430	SPACER, SHAFT	1	1	1					
29	2	129155-61450	BOLT, REVOL. LIMIT	1	1						
29-1	2	129155-61450	BOLT, REVOL. LIMIT	2							K
(A=E05593)											
29A	2	119988-61460	BOLT, REVOL. LIMIT			1					
30	2	129155-61460	BOLT, IDLE LIMIT	1	1	1					
31	2	129155-61480	SPACER ASSY	2	2	2					
36	2	129052-61390	SHAFT, GOV. LEVER	1	1	1					
37	2	129052-61500	LEVER ASSY,GOVERNOR	1							
38	2	129412-61500	LEVER ASSY,GOVERNOR		1	1					
39	3	174307-51700	SHIM SET	2	2	2					
53	3	129052-61540	SPRING	1							
54	3	119843-61540	SPRING		1	1					
64	2	129155-61830	O-RING S10	1	1	1					
65	2	119660-61901	RETAINER, SHAFT	1	1	1					
66	2	129155-61950	BOLT, WASHER BASED	1	1	1					
67	2	124550-66370	LOCK NUT M 6	1	1						
68	2	22117-040000	WASHER 4	1	1	1					
69	2	22190-060002	SEAL WASHER 6S	1	1	1					
69-1	2	22190-060003	SEAL WASER 6	2	1						N
(A=EXXX) (B=EXXX)											
70	2	22190-100002	SEAL WASHER 10S	1	1	1					
71	2	22190-120002	SEAL WASHER 12	2	2	1					
72	2	22287-120000	WASHER 12	1	1	1					
73	2	22372-040000	SNAP PIN 4	2	2	2					
74	2	23887-100002	PLUG 10	1	1	1					
75	2	24341-000280	O-RING 1A S-28.0	1	1	1					
I	75-1	2	158552-61900	O-RING	1	1	1				N
(A=EXXXXX) (B=EXXXXX) (C=EXXXXX)											
76	2	26106-060102	BOLT 6X 10 PLATED	1	1	1					
77	2	26106-060102	BOLT 6X 10 PLATED	1	1						Z
(A=E05593)											
78	2	26106-060102	BOLT 6X 10 PLATED	4	4	4					
79	2	26106-060142	BOLT M 6X 14 PLATED	2	2	2					

Fig.13. GOVERNOR

13. GOVERNOR



Remarks

- (1) SELECTIVE PARTS: CERTAIN THE CLASSIFICATION MARK, THEN PLACE YOUR ORDER.(REFER TO ILLUSTRATION).
- (2) SELECTIVE PARTS.
* THIS FIGURE(GOVERNOR ASSY) IS INCORPORATED IN THE FUEL INJECTION PUMP ASSY(FIG. 12).
- (3) REPAIR PART.

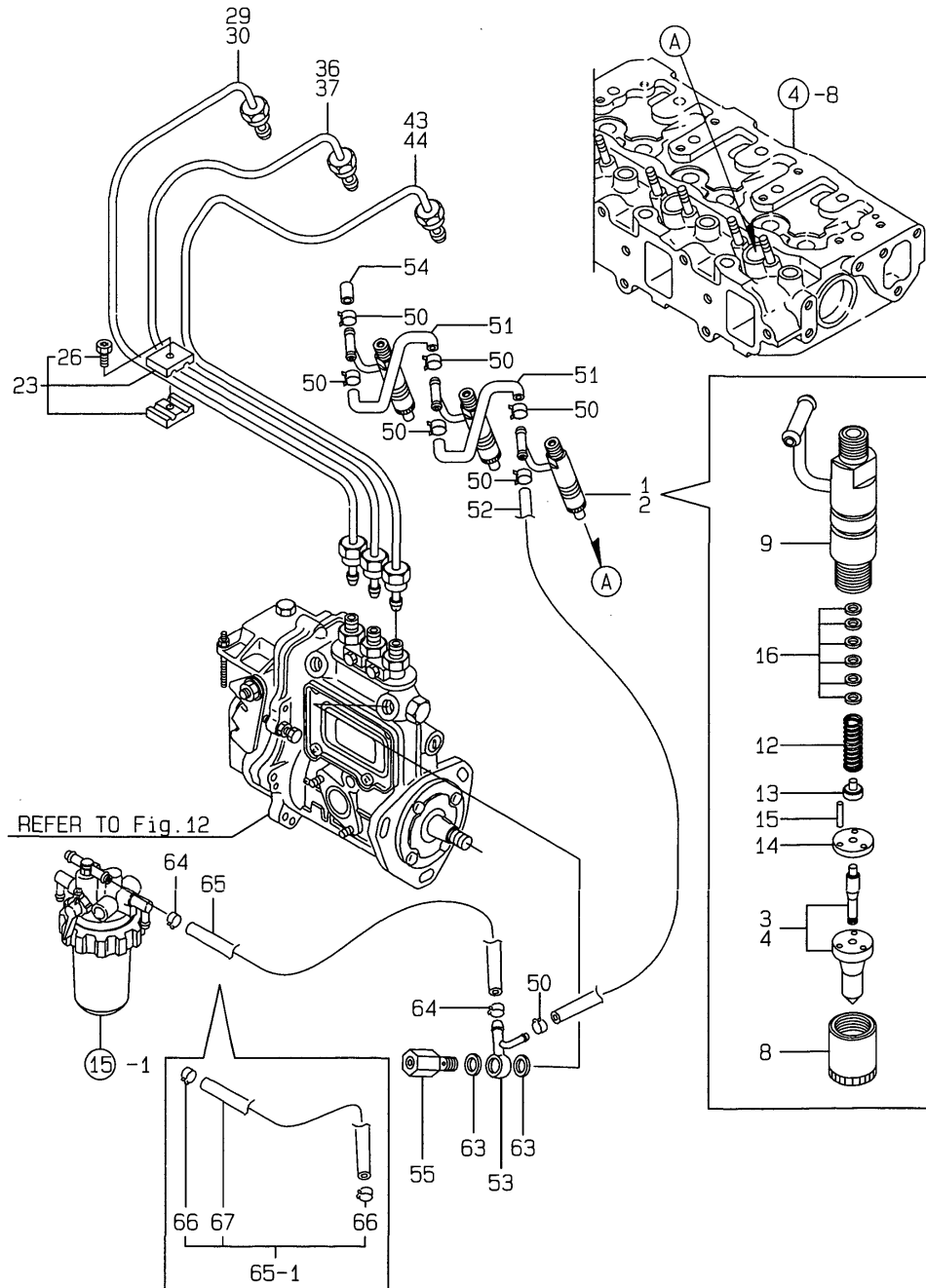
(A)=3TNE88-SA
(B)=3TNE88-G1A
(C)=3TNE88C-G1A

(D)=
(E)=
(F)=

REF.	LEV.	PARTS NO.	DESCRIPTION	Q'TY						I	R
				(A)	(B)	(C)	(D)	(E)	(F)		
80	2	26106-060202	BOLT M 6X 20 PLATED	6	6	6					
81	2	26756-060002	LOCK NUT 6	1	1	1					
81-1	2	26756-060002	LOCK NUT 6	2							K
(A=E05593)											
81A	2	119600-66840	NUT, CAP	1							W
(A=E05593)											
81B	2	119685-61940	CARB NUT(FO-LIMIT)								1
81C	2	119685-61950	CARB NUT(HI-IDLE)								1
82	1	26366-080002	NUT M 8	1	1	1					
83	1	129100-61440	LEVER, CONTROL	1	1	1					
84	1	129100-61650	SPRING, FUEL CONTROL	1							
85	1	129500-61650	SPRING, FUEL CONTROL			1	1				
86	1	171353-61700	SPRING, GOVERNOR	1							
87	1	129477-61720	SPRING, GOVERNOR			1	1				
88	1	119653-77950	SOLENOID, STOP	1	1	1					
89	1	26687-120002	CAP NUT M12	1	1						
90	1	129155-61470	BOLT, FUEL CONTROL	1	1	1					
92	1	119621-66610	PLUG 22								1
94	1	119621-66710	PLUG 14								1

Fig.14. FUEL INJECTION VALVE

14.FUEL INJECTION VALVE



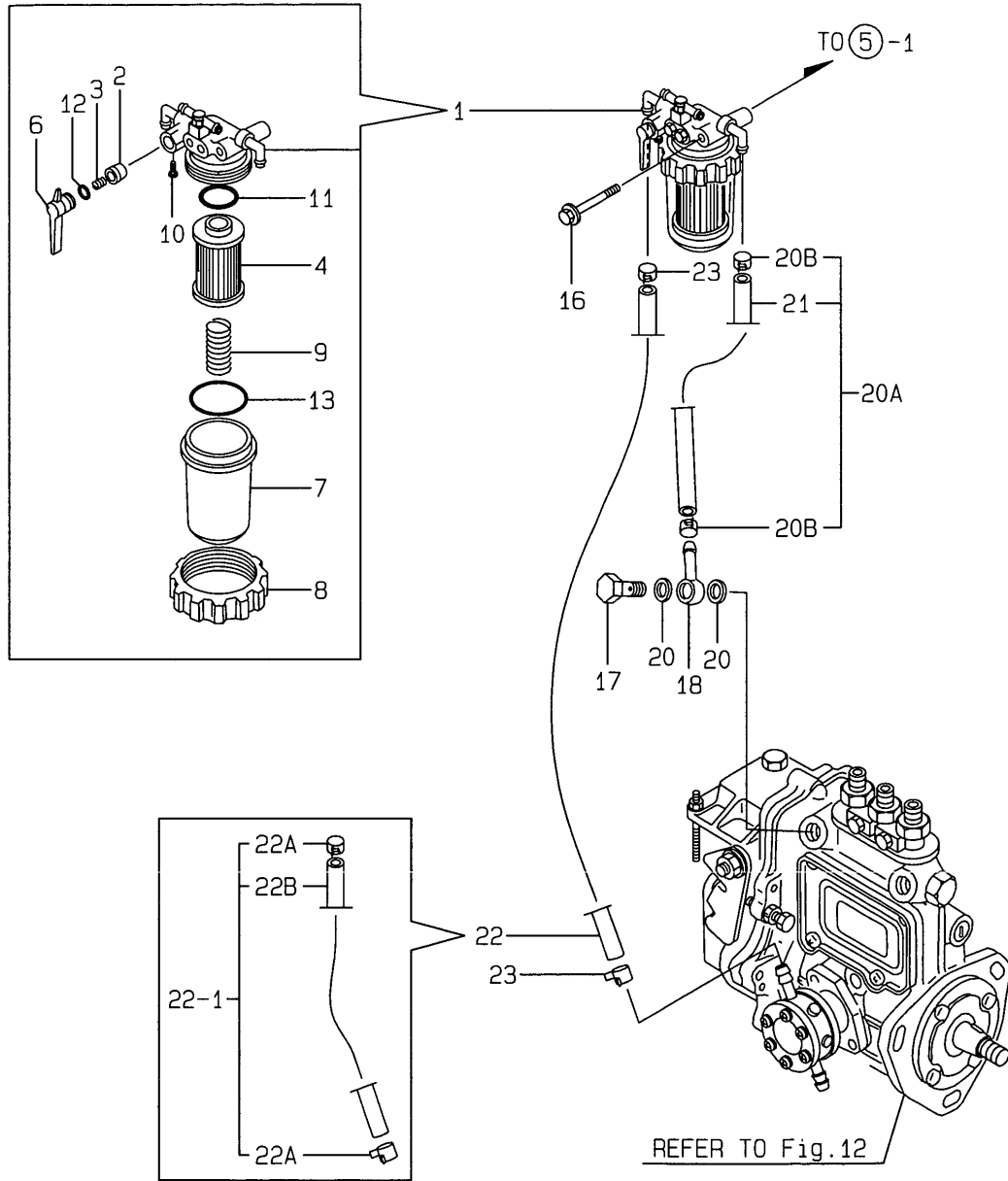
(A)=3TNE88-SA
(B)=3TNE88-G1A
(C)=3TNE88C-G1A

(D)=
(E)=
(F)=

REF.	LEV.	PARTS NO.	DESCRIPTION	QTY						I	R
				(A)	(B)	(C)	(D)	(E)	(F)		
1	1	729503-53100	VALVE ASSY, F.INJECT	3							
2	1	719810-53100	VALVE ASSY, F.INJECT		3	3					
3	2	129503-53000	NOZZLE ASSY,F.INJECT	3							
4	2	119810-53000	NOZZLE ASSY,F.INJECT		3	3					
8	2	114250-53080	NUT, NOZZLE CASE	3	3	3					
9	2	129100-53100	HOLDER ASSY, NOZZLE	3	3	3					
12	2	114250-53120	SPRING, NOZZLE	3	3	3					
13	2	114250-53130	SEAT, NOZZLE SPRING	3	3	3					
14	2	114250-53140	PLATE, STOP	3	3	3					
15	2	114250-53210	PIN	6	6	6					
16	2	114250-53400	SHIM PACK	3	3	3					
23	1	119305-59120	RETAINER	2	2	2					
26	2	129150-59131	BOLT M4X14,HEX.SCKT.	2	2	2					
29	1	129001-59811	PIPE, FUEL INJECTION	1							
I 29-1	1	129052-59710	PIPE, FUEL INJECTION	1							R
		(A=E07057)									
30	1	129002-59810	PIPE, FUEL INJECTION		1	1					
36	1	129001-59821	PIPE, FUEL INJECTION	1							
I 36-1	1	129052-59720	PIPE, FUEL INJECTION	1							R
		(A=E07057)									
37	1	129002-59820	PIPE, FUEL INJECTION		1	1					
43	1	129001-59831	PIPE, FUEL INJECTION	1							
I 43-1	1	129052-59730	PIPE(1 ASSY)	1							R
		(A=E07057)									
44	1	129002-59831	PIPE, FUEL INJECTION		1	1					
50	1	124066-59100	CLAMP 8	7	7	7					
51	1	121250-59550	PIPE, FUEL	2	2	2					
52	1	119840-59560	PIPE, FUEL RETURN	1	1	1					
53	1	119840-59570	JOINT	1	1	1					
54	1	129150-59580	CAP	1	1	1					
55	1	129100-59951	VALVE ASSY, CHECK	1	1	1					
63	1	23414-120000	GASKET 12, ROUND	2	2	2					
I 64	1	124766-59050	CLAMP 12	2	2	2					Z
		(A=E07043) (B=E07153) (C=E00204)									
65	1	129255-59580	PIPE, FUEL	1	1	1					
I 65-1	1	129210-59130	PIPE ASSY, FUEL OIL	1	1	1					N
		(A=E07043) (B=E07153) (C=E00204)									
I 66	2	124766-59050	CLAMP 12	2	2	2					W
		(A=E07043) (B=E07153) (C=E00204)									
I 67	2	105025-59750	PIPE, FUEL OIL	1	1	1					W
		(A=E07043) (B=E07153) (C=E00204)									

Fig.15. FUEL FILTER

15.FUEL FILTER



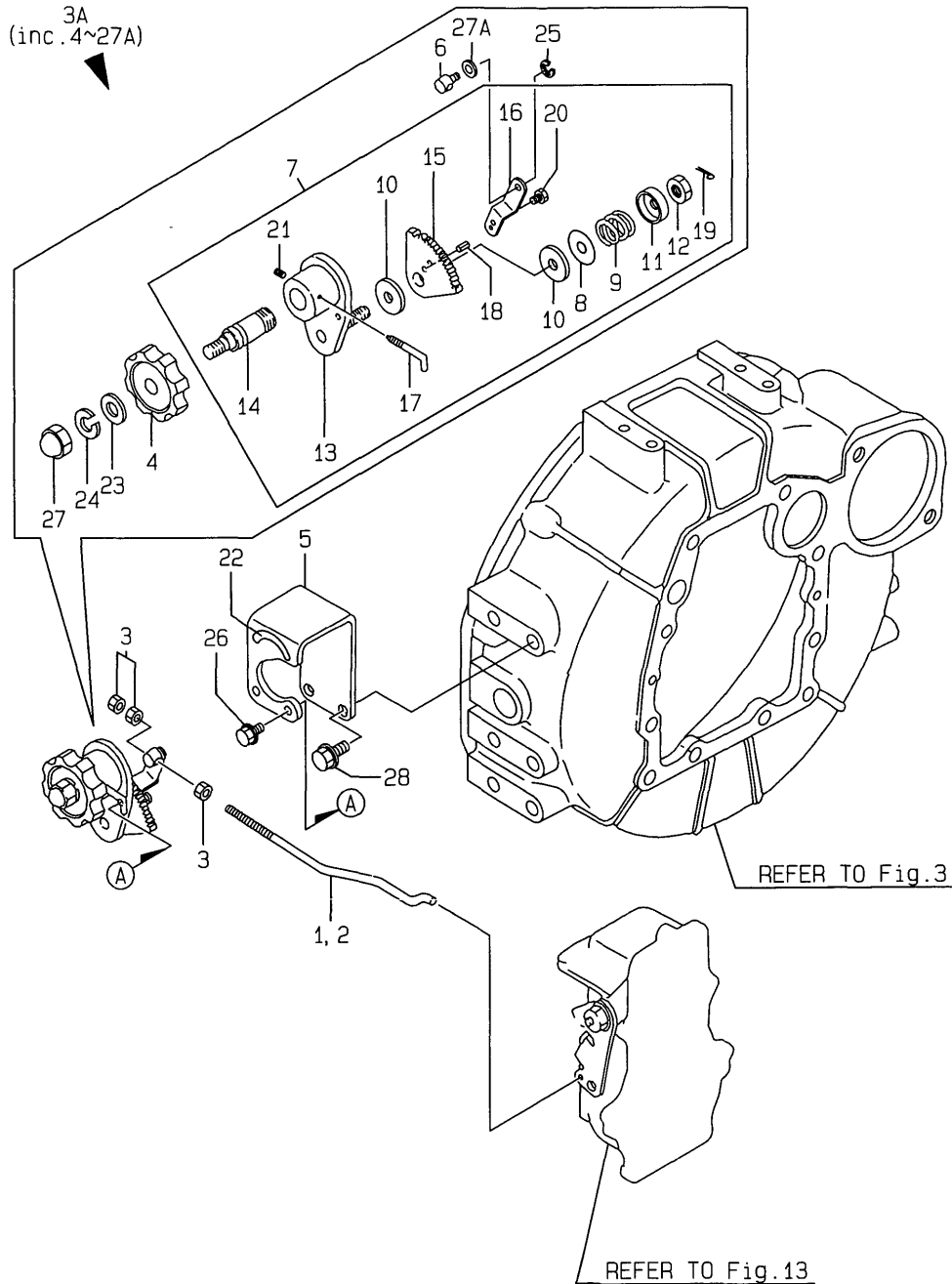
(A)=3TNE88-SA
(B)=3TNE88-G1A
(C)=3TNE88C-G1A

(D)=
(E)=
(F)=

REF.	LEV.	PARTS NO.	DESCRIPTION	QTY						I	R
				(A)	(B)	(C)	(D)	(E)	(F)		
1	1	129052-55620	STRAINER ASSY, FUEL	1	1	1					
2	2	104200-55321	VALVE, TAPER	1	1	1					
3	2	104200-55330	SPRING, TAPER VALVE	1	1	1					
4	2	129100-55650	ELEMENT, FUEL	1	1	1					
6	2	129100-55670	LEVER	1	1	1					
7	2	129100-55680	CUP, STRAINER	1	1	1					
8	2	129100-55690	RING, RETAINING	1	1	1					
9	2	129100-55700	SPRING	1	1	1					
10	2	104200-55750	SCREW M 4	1	1	1					
11	2	24311-000160	O-RING 1A P-16.0	1	1	1					
12	2	24311-240100	O-RING 1A P-10A	1	1	1					
13	2	24321-000650	O-RING 1A G-65.0	1	1	1					
16	1	26014-080702	BOLT W/WASHER M8X 70	1	1	1					
17	1	103854-39140	BOLT, PIPE JOINT	1	1	1					
18	1	101304-59020	JOINT 12, PIPE	1	1	1					
20	1	104200-59170	GASKET 12	2	2	2					
I 20-1	1	22190-120002	SEAL WASHER 12	2	2	2					N
		(A=E04833) (B=E04704) (C=E00103)									
I 20A	1	129210-59020	PIPE ASSY, FUEL OIL	1	1	1					W
		(A=E07043) (B=E07153) (C=E00204)									
I 20B	2	124766-59050	CLAMP 12	2	2	2					W
		(A=E07043) (B=E07153) (C=E00204)									
I 21	2	129115-59510	PIPE, FUEL	1	1	1					
22	1	129255-59580	PIPE, FUEL	1	1	1					
I 22-1	1	129210-59130	PIPE ASSY, FUEL OIL	1	1	1					N
		(A=E07043) (B=E07153) (C=E00204)									
I 22A	2	124766-59050	CLAMP 12	2	2	2					W
		(A=E07043) (B=E07153) (C=E00204)									
I 22B	2	105025-59750	PIPE, FUEL OIL	1	1	1					W
		(A=E07043) (B=E07153) (C=E00204)									
I 23	1	124766-59050	CLAMP 12	2	2	2					Z
		(A=E07043) (B=E07153) (C=E00204)									

Fig.16. ENGINE CONTROL DEVICE

16.ENGINE CONTROL DEVICE



(A)=3TNE88-SA
(B)=3TNE88-G1A
(C)=3TNE88C-G1A

(D)=
(E)=
(F)=

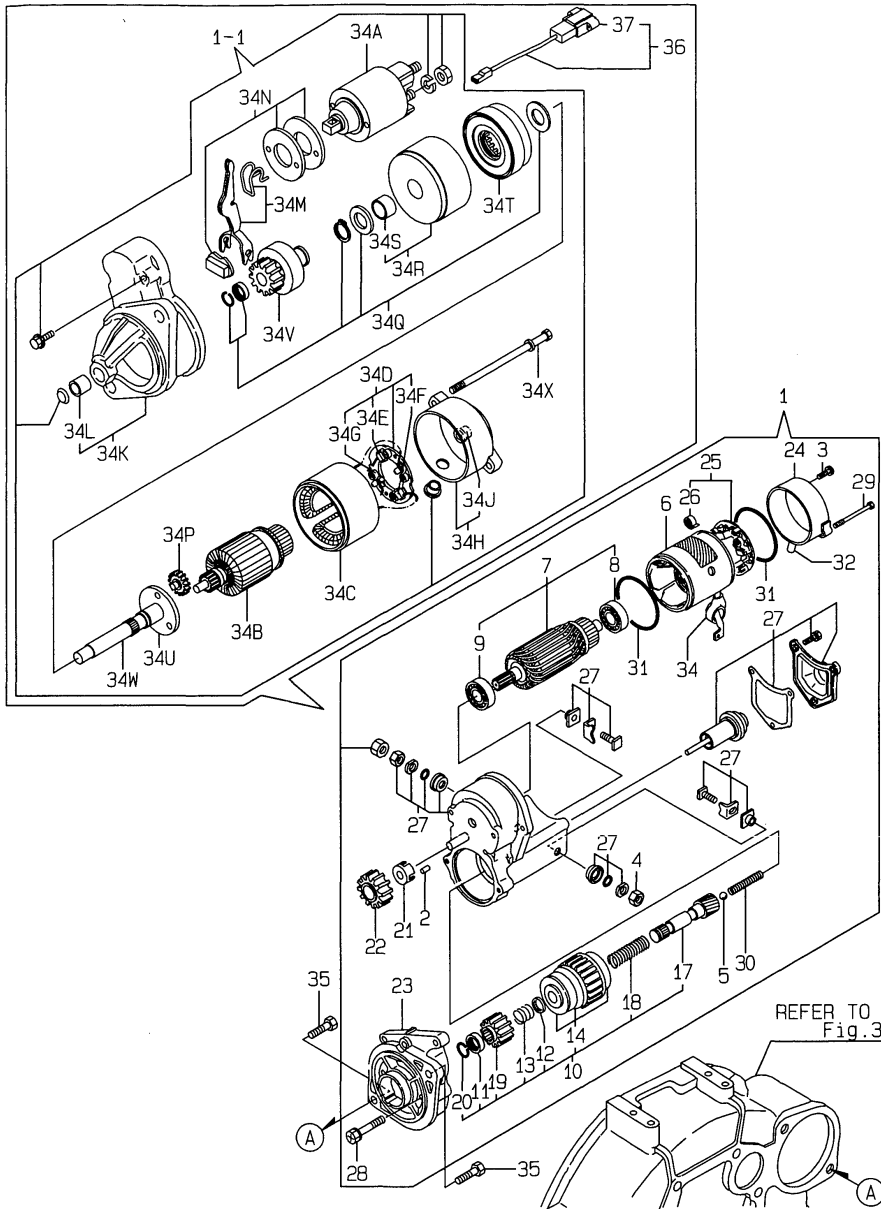
REF.	LEV.	PARTS NO.	DESCRIPTION	QTY						I	R
				(A)	(B)	(C)	(D)	(E)	(F)		
1	1	119888-66120	LINK, GOVERNOR	1							
2	1	119888-66150	LINK, CONTROL		1						
3	1	26756-050002	LOCK NUT M 5 PLATED	3	3	3					
I	3A	1 119888-66160 (A=E07093) (B=E07153) (C=E00214)	CONTROL DEVICE	1	1	1					W
I	4	2 126650-66020	HANDLE, REGULATOR	1	1	1					
I	5	2 119888-66110	BRACKET	1	1	1					
I	6	2 119888-66130	PIVOT	1	1	1					
I	7	2 171048-67010	REGULATOR ASSY	1	1	1					
I	8	3 171102-66080	SPACER	1	1	1					
I	9	3 104200-66820	SPRING	1	1	1					
I	10	3 104200-66830	PLATE, FRICTION	2	2	2					
I	11	3 104200-66850	WASHER (B)	1	1	1					
I	12	3 104200-66860	NUT	1	1	1					
I	13	3 171085-67100	BRACKET, GEAR	1	1	1					
I	14	3 171085-67110	SHAFT, DRIVING	1	1	1					
I	15	3 171085-67120	GEAR	1	1	1					
I	16	3 171048-67130	LEVER	1	1	1					
I	17	3 171048-67140	STOPPER	1	1	1					
I	18	3 22351-020006	SPRING PIN 2X 6	1	1	1					
I	19	3 22411-200150	COTTER PIN	1	1	1					
I	20	3 26116-060082	BOLT 6X8	1	1	1					
I	21	3 26921-050122	SCREW M 5X 12	1	1	1					
I	22	2 170064-67210	LABEL, HANDLE	1	1	1					
I	23	2 22117-100000	WASHER 10	1	1	1					
I	23-1	2 22137-100000 (A=EXXX) (B=EXXX) (C=EXXX)	WASHER 10,POLISHED	1	1	1					N
I	24	2 22217-100000	SPRING WASHER 10	1	1	1					
I	25	2 22272-000050	CIRCLIP E- 5	1	1	1					
I	26	2 26106-060102	BOLT 6X 10 PLATED	2	2	2					
I	27	2 26657-100002	CAP NUT M10	1	1	1					
I	27A	2 22117-060000 (A=EXXX) (B=EXXX) (C=EXXX)	WASHER 6	1	1	1					W
	28	1 26106-080162	BOLT M 8X 16 PLATED	2	2	2					

Fig.17. STARTING MOTOR(STANDARD)

(A)=3TNE88-SA
(B)=3TNE88-G1A
(C)=3TNE88C-G1A

(D)=
(E)=
(F)=

17. STARTING MOTOR (STANDARD)



REF.	LEV.	PARTS NO.	DESCRIPTION	QTY						I	R
				(A)	(B)	(C)	(D)	(E)	(F)		
1	1	129129-77010	STARTER ASSY	1	1	1					
I	1-1	129698-77010 (A=E06848)	STARTER	1							F 1
I	2	X0283060061 (A=E06848)	ROLLER	5	5	5					Z
I	3	X0289030010	SCREW	2	2	2					Z
I	3-1	129129-77460 (A=E05996) (B=E06079) (C=E00140)	SCREW	2	2	2					R
I	3-2	129129-77460 (A=E06848)	SCREW	2							Z
I	4	X9490561370 (A=E06848)	NUT	1	1	1					Z
I	5	X9491200240 (A=E06848)	BALL	1	1	1					Z
I	6	129129-77210 (A=E06848)	YOKE ASSY	1	1	1					Z
I	7	129129-77220 (A=E06848)	ARMATURE ASSY	1	1	1					Z
I	8	129129-77230 (A=E06848)	BEARING	1	1	1					Z
I	9	129129-77240 (A=E06848)	BEARING	1	1	1					Z
I	10	129129-77250 (A=E06848)	STARTER ASSY	1	1	1					Z
I	11	X0280210230 (A=E06848)	NUT	1	1	1					Z
I	12	X0283270140 (A=E06848)	RETAINER	1	1	1					Z
I	13	X9491703371 (A=E06848)	SPRING, COIL	1	1	1					Z
I	14	129129-77390 (A=E06848)	CLUTCH ASSY, STARTER	1	1	1					Z
I	17	129129-77400 (A=E06848)	SHAFT	1	1	1					Z
I	18	129129-77410 (A=E06848)	SPRING, COIL	1	1	1					Z
I	19	129129-77420 (A=E06848)	PINION	1	1	1					Z
I	20	129129-77430 (A=E06848)	RING	1	1	1					Z
I	21	129129-77260 (A=E06848)	RETAINER	1	1	1					Z
I	22	129129-77270 (A=E06848)	PINION	1	1	1					Z
I	23	129129-77280 (A=E06848)	HOUSING	1	1	1					Z
I	24	129129-77290 (A=E06848)	FRAME	1	1	1					Z
I	25	129129-77300 (A=E06848)	HOLDER ASSY	1	1	1					Z
I	26	X9491730461	SPRING	4	4	4					Z

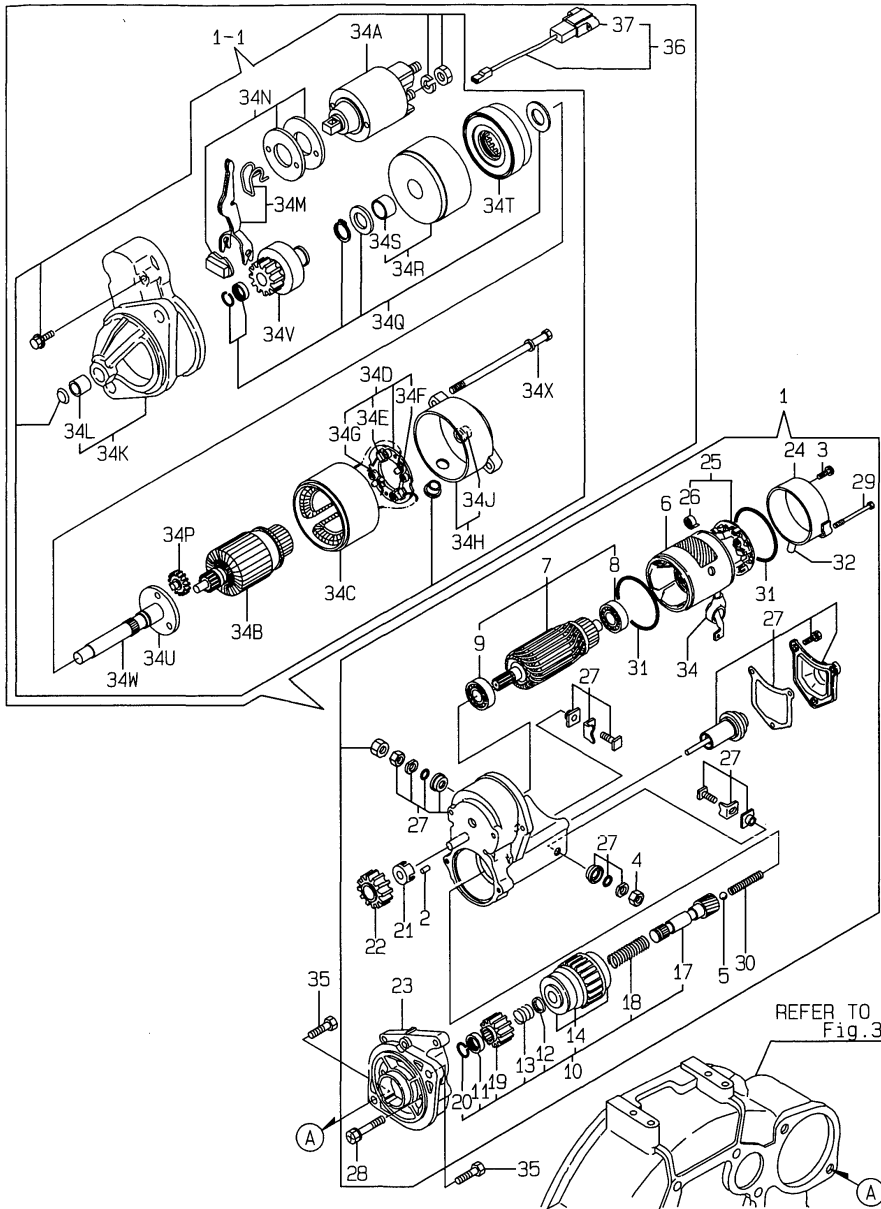
Remarks
(1) REF.NO.1-1 & 36 INTERCHANGEABLE
BY SET.

Fig.17. STARTING MOTOR(STANDARD)

(A)=3TNE88-SA
(B)=3TNE88-G1A
(C)=3TNE88C-G1A

(D)=
(E)=
(F)=

17. STARTING MOTOR (STANDARD)



REF.	LEV.	PARTS NO.	DESCRIPTION	QTY						I	R
				(A)	(B)	(C)	(D)	(E)	(F)		
I	27	(A=E06848) 2 129129-77310	SWITCH ASSY	1	1	1					Z
I	28	(A=E06848) 2 129129-77320	BOLT	2	2	2					Z
I	29	(A=E06848) 2 129129-77330	BOLT	2	2	2					Z
I	30	(A=E06848) 2 129129-77340	SPRING	1	1	1					Z
I	31	(A=E06848) 2 129129-77350	O-RING	2	2	2					Z
I	32	(A=E06848) 2 129129-77361	BUSH, DRAIN	1	1	1					
I	32-1	(A=E05996) 2 129129-77362	COVER	1	1	1					R
I	32-2	(A=E05996) 2 129129-77362	COVER	1							Z
I	34	(A=E06848) 2 129129-77380	CAP	1	1	1					Z
I	34A	(A=E06848) 2 129698-77020	MAGNETIC SWITCH ASSY	1							W
I	34B	(A=E06848) 2 129698-77100	ARMATURE ASSY	1							W
I	34C	(A=E06848) 2 129698-77110	COIL ASSY, FIELD	1							W
I	34D	(A=E06848) 2 129698-77120	HOLDER ASSY,BRUSH	1							W
I	34E	(A=E06848) 3 129698-77140	BRUSH(+) SET	1							W
I	34F	(A=E06848) 3 129698-77130	BRUSH (-)	2							W
I	34G	(A=E06848) 3 129698-77150	SPRING, BRUSH	4							W
I	34H	(A=E06848) 2 129698-77161	COVER ASSY, REAR	1							W
I	34J	(A=E06848) 3 129698-77170	REAR COVER METAL	1							W
I	34K	(A=E06848) 2 129698-77260	HOUSING ASSY, GEARS	1							W
I	34L	(A=E06848) 3 X2114535200	METAL, STARTER	1							W
I	34M	(A=E06848) 2 129698-77270	LEVER, SHIFT	1							W
I	34N	(A=E06848) 2 129698-77280	COVER ASSY, DUST	1							W
I	34P	(A=E06848) 2 129698-77240	GEAR	3							W
I	34Q	(A=E06848) 2 129698-77250	WASHER SET	1							W
I	34R	(A=E06848) 2 129698-77180	BRACKET	1							W
I	34S	(A=E06848) 3 129698-77190	BRACKET	1							W

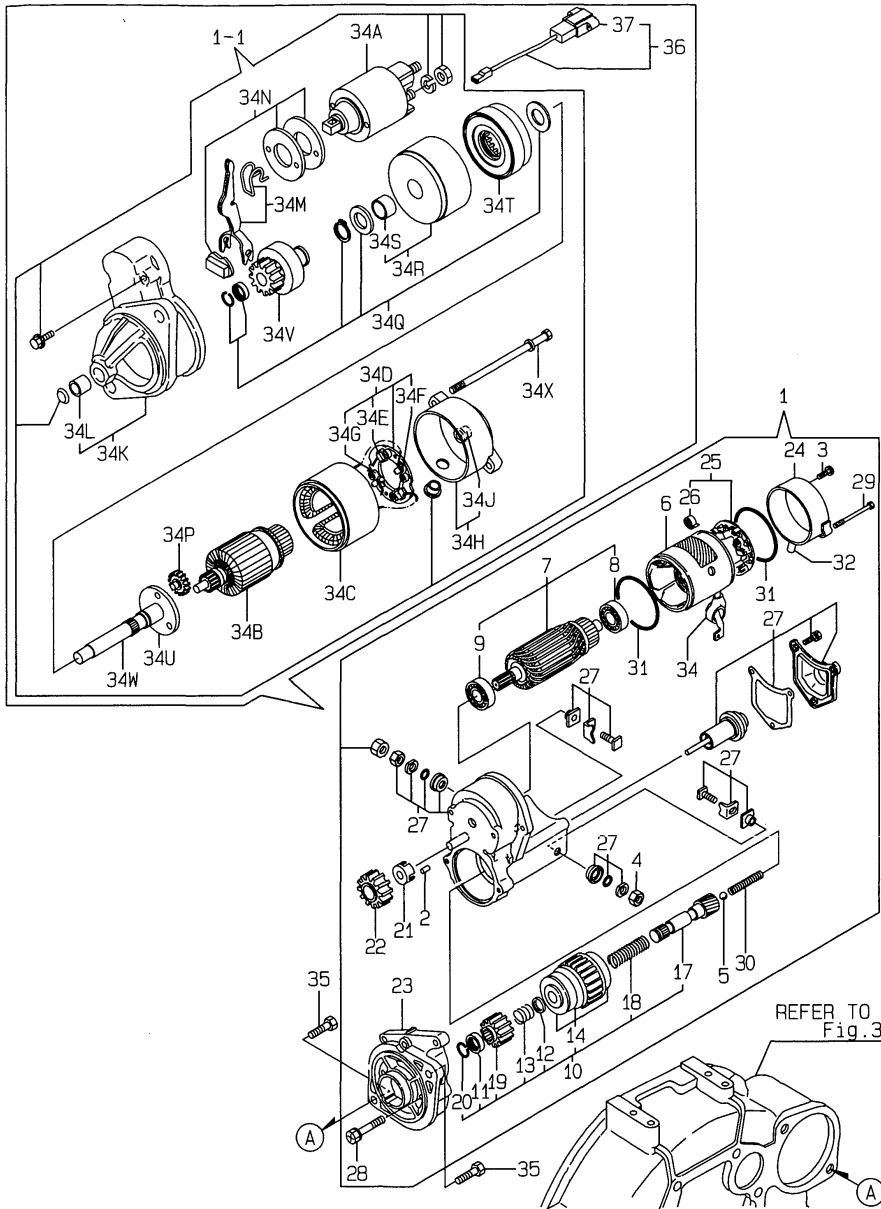
Remarks
(1) REF.NO.1-1 & 36 INTERCHANGEABLE
BY SET.

Fig.17. STARTING MOTOR(STANDARD)

(A)=3TNE88-SA
(B)=3TNE88-G1A
(C)=3TNE88C-G1A

(D)=
(E)=
(F)=

17. STARTING MOTOR (STANDARD)

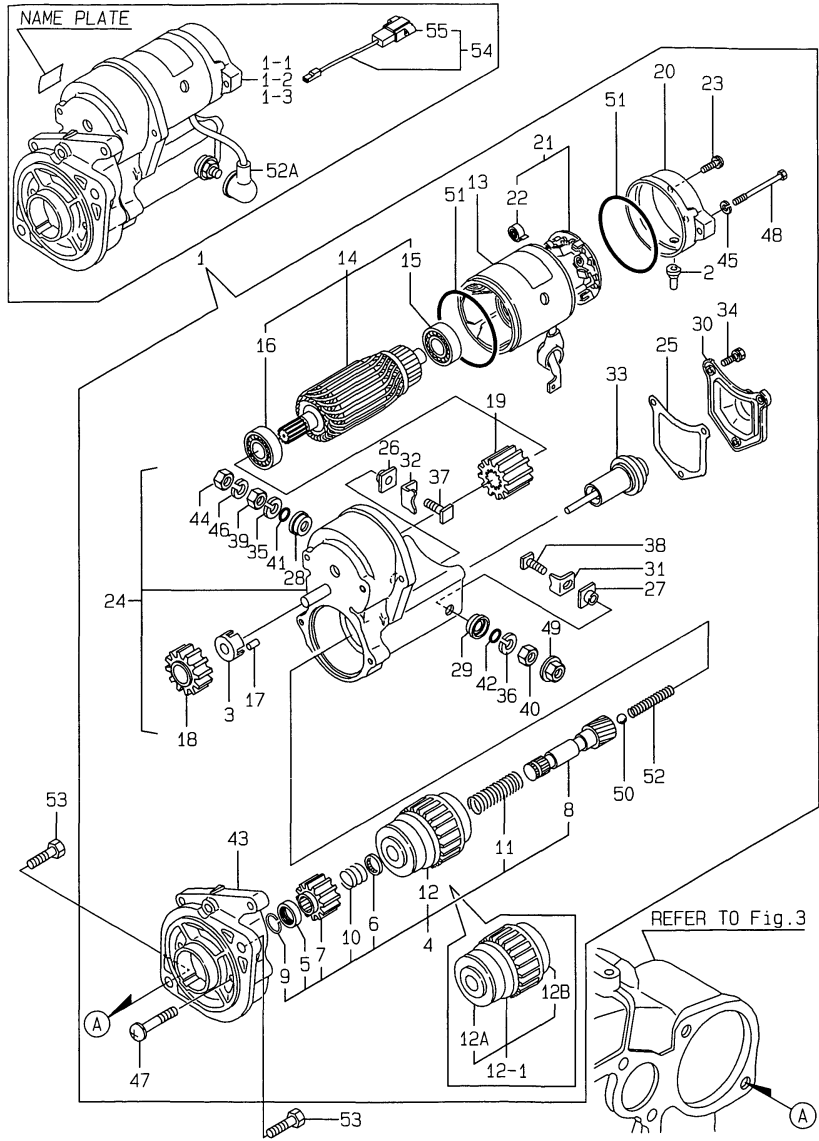


REF.	LEV.	PARTS NO.	DESCRIPTION	QTY						I	R
				(A)	(B)	(C)	(D)	(E)	(F)		
I	34T	(A=E06848) 2 129698-77200	INTERNAL GEAR	1							W
I	34U	(A=E06848) 2 129698-77210	BRACKET	1							W
I	34V	(A=E06848) 2 129698-77220	PINION ASSY	1							W
I	34W	(A=E06848) 2 129698-77230	SHAFT(PINION	1							W
I	34X	(A=E06848) 2 124195-77770	THROUGH BOLT	2							W
	35	(A=E06848) 1 26116-120252	BOLT M12X 25 PLATED	2	2	2					
I	36	(A=E06848) 1 129052-77951	CONNECTOR	1							W
I	37	(A=E06848) 2 129052-77960	305 1P HOUSING	1							W

Remarks
(1) REF.NO.1-1 & 36 INTERCHANGEABLE
BY SET.

Fig.18. STARTING MOTOR(COLD DISTRICT)

18. STARTING MOTOR (COLD DISTRICT)



Remarks
 (1) REF.NO.1-1 & 54 INTERCHANGEABLE BY SET.
 SEE GROUP NO.22 FOR MORE DETAIL.
 (2) NAME PLATE= BLACK(121120-77012).
 (3) NAME PLATE= RED(129407-77010).

OCR10-G45401 18. STARTING MOTOR(COLD DISTRICT)

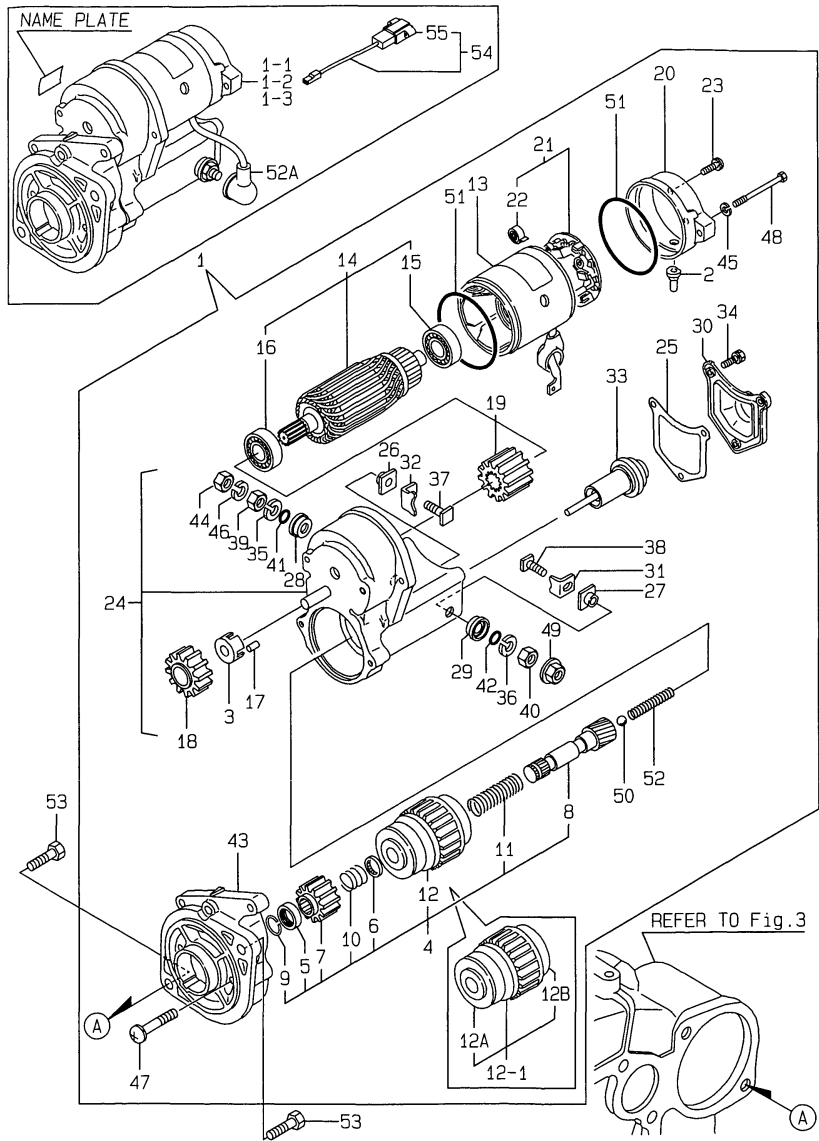
(A)=3TNE88-SA
 (B)=3TNE88-G1A
 (C)=3TNE88C-G1A

(D)=
 (E)=
 (F)=

REF.	LEV.	PARTS NO.	DESCRIPTION	QTY						I	R
				(A)	(B)	(C)	(D)	(E)	(F)		
1	1	121120-77011	STARTER	1	1						
I	1-1	1 121120-77012 (A=E03814) (B=E03598)	STATER ASSY	1	1	1					R 2
I	1-2	1 129407-77010 (A=E06362) (B=E06304) (C=E00151)	STARTER ASSY	1	1	1					R 3
I	1-3	1 129608-77010 (A=E06848)	STARTNG MOTOR	1							F 1
2	2	X0280620480	COVER	1	1						
I	2-1	2 129129-77362 (A=E03814) (B=E03598)	COVER	1	1	1					S 2
3	2	X0280630011	RETAINER	1	1						
I	3-1	2 129129-77260 (A=E03814) (B=E03598)	RETAINER	1	1	1					S 2
4	2	X0280992381	CLUTCH KIT	1	1						
I	4-1	2 121120-77250 (A=E03814) (B=E03598)	STARTER ASSY	1	1	1					S 2
I	4-2	2 129407-77250 (A=E06362) (B=E06304) (C=E00151)	STARTER KIT	1	1	1					S 3
5	3	X0280210230	NUT	1	1	1					
6	3	X0283270140	RETAINER	1	1						
I	6-1	3 129129-77260 (A=E03814) (B=E03598)	RETAINER	1	1	1					S 2
I	6-2	3 X0283270140 (A=E06362) (B=E06304) (C=E00151)	RETAINER	1	1	1					S 3
7	3	X0283711770	PINION	1	1						
I	7-1	3 129129-77270 (A=E03814) (B=E03598)	PINION	1	1	1					S 2
I	7-2	3 129129-77420 (A=E06362) (B=E06304) (C=E00151)	PINION	1	1	1					S 3
8	3	X0283810040	SHAFT	1	1						
I	8-1	3 129129-77400 (A=E03814) (B=E03598)	SHAFT	1	1	1					S 2
9	3	X9490721080	RING	1	1						
I	9-1	3 129129-77430 (A=E03814) (B=E03598)	RING	1	1	1					S 2
10	3	X9491703371	SPRING, COIL	1	1						
I	10-1	3 129407-77410 (A=E03814) (B=E03598)	SPRING	1	1	1					S 2
11	3	X9491704260	SPRING	1	1						
I	11-1	3 129129-77410 (A=E03814) (B=E03598)	SPRING, COIL	1	1	1					S 2
12	3	121120-77930	CLUTCH ASSY, STARTER	1	1						
I	12-1	3 129129-77390 (A=E03814) (B=E03598)	CLUTCH ASSY, STARTER	1	1	1					S 2
I	12-2	3 129407-77390 (A=E06362) (B=E06304) (C=E00151)	CLUTCH,STARTER	1	1	1					S 3
I	12A	4 129129-77440 (A=E03814) (B=E03598)	BEARING	1	1	1					W
I	12B	4 129129-77450 (A=E03814) (B=E03598)	BEARING	1	1	1					W
13	2	X0281003770	YOKE ASSY	1	1						

Fig.18. STARTING MOTOR(COLD DISTRICT)

18. STARTING MOTOR (COLD DISTRICT)



Remarks

- (1) REF.NO.1-1 & 54 INTERCHANGEABLE BY SET.
- SEE GROUP NO.22 FOR MORE DETAIL.
- (2) NAME PLATE= BLACK(121120-77012).
- (3) NAME PLATE= RED(129407-77010).

OCR10-G45401 18. STARTING MOTOR(COLD DISTRICT)

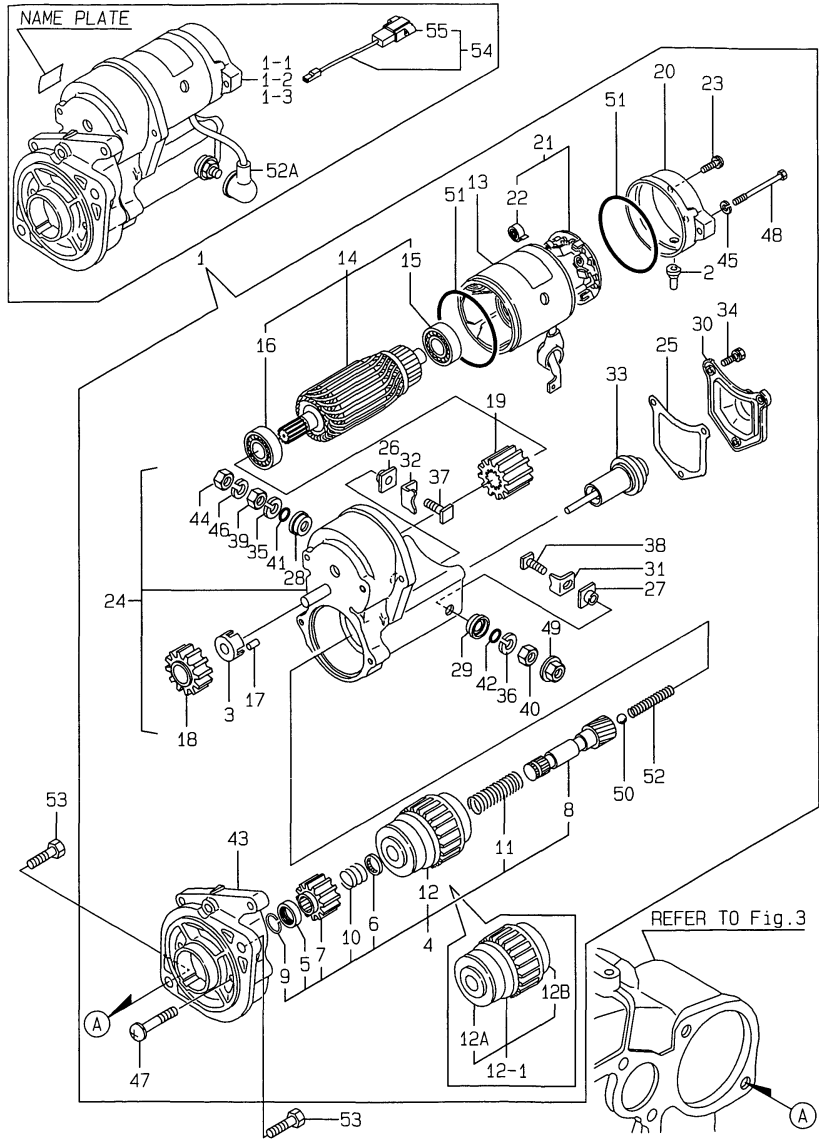
(A)=3TNE88-SA
(B)=3TNE88-G1A
(C)=3TNE88C-G1A

(D)=
(E)=
(F)=

REF.	LEV.	PARTS NO.	DESCRIPTION	QTY						I	R	
				(A)	(B)	(C)	(D)	(E)	(F)			
I	13-1	2	129407-77210	YOKE	1	1	1				S	2
			(A=E03814) (B=E03598)									
	14	2	X0282002320	HOUSING ASSY	1	1						
I	14-1	2	129407-77220	ARMATURE ASSY	1	1	1				S	2
			(A=E03814) (B=E03598)									
	15	3	X9491002590	BALL BEARING	1	1						
I	15-1	3	129129-77230	BEARING	1	1	1				S	2
			(A=E03814) (B=E03598)									
	16	3	X9491002760	BALL BEARING	1	1						
I	16-1	3	129129-77240	BEARING	1	1	1				S	2
			(A=E03814) (B=E03598)									
	17	2	X0283060061	ROLLER	5	5	5					
	18	2	X0283711420	PINION	1	1						
I	18-1	2	129129-77270	PINION	1	1	1				S	2
			(A=E03814) (B=E03598)									
I	19	2	X0283712360	PINION	1	1					Z	
			(A=E03814) (B=E03598)									
	20	2	X0285011600	FRAME	1	1						
I	20-1	2	129407-77290	FRAME	1	1	1				S	2
			(A=E03814) (B=E03598)									
I	20-2	2	129129-77290	FRAME	1	1	1				S	3
			(A=E06362) (B=E06304) (C=E00151)									
	21	2	X0285100750	HOLDER ASSY, BRUSH	1	1						
I	21-1	2	129407-77300	HOLDER ASSY	1	1	1				S	2
			(A=E03814) (B=E03598)									
I	22	3	X9491730461	SPRING	4	4	4					
	23	2	X0289030010	SCREW	2	2						
I	23-1	2	129129-77460	SCREW	2	2	2				S	2
			(A=E03814) (B=E03598)									
	24	2	X0534006470	SWITCH ASSY, MAGNET.	1	1						
I	24-1	2	129407-77310	SWITCH ASSY	1	1	1				S	2
			(A=E03814) (B=E03598)									
I	25	3	X0534040320	GASKET	1	1					Z	
			(A=E03814) (B=E03598)									
I	26	3	X0534490120	BUSH	1	1					Z	
			(A=E03814) (B=E03598)									
I	27	3	X0534490120	BUSH	1	1					Z	
			(A=E03814) (B=E03598)									
I	28	3	X0534490230	BUSH	1	1					Z	
			(A=E03814) (B=E03598)									
I	29	3	X0534490230	BUSH	1	1					Z	
			(A=E03814) (B=E03598)									
I	30	3	X0535050620	COVER	1	1					Z	
			(A=E03814) (B=E03598)									
I	31	3	X0535130241	PLATE (B)	1	1					Z	
			(A=E03814) (B=E03598)									
I	32	3	X0535130320	PLATE (A)	1	1					Z	
			(A=E03814) (B=E03598)									
I	33	3	X0536600401	PLUNGER	1	1					Z	
			(A=E03814) (B=E03598)									
I	34	3	X9151005141	BOLT W/WASHER	3	3					Z	

Fig.18. STARTING MOTOR(COLD DISTRICT)

18. STARTING MOTOR (COLD DISTRICT)



Remarks
 (1) REF.NO.1-1 & 54 INTERCHANGEABLE BY SET.
 SEE GROUP NO.22 FOR MORE DETAIL.
 (2) NAME PLATE= BLACK(121120-77012).
 (3) NAME PLATE= RED(129407-77010).

OCR10-G45401 18. STARTING MOTOR(COLD DISTRICT)

(A)=3TNE88-SA
 (B)=3TNE88-G1A
 (C)=3TNE88C-G1A

(D)=
 (E)=
 (F)=

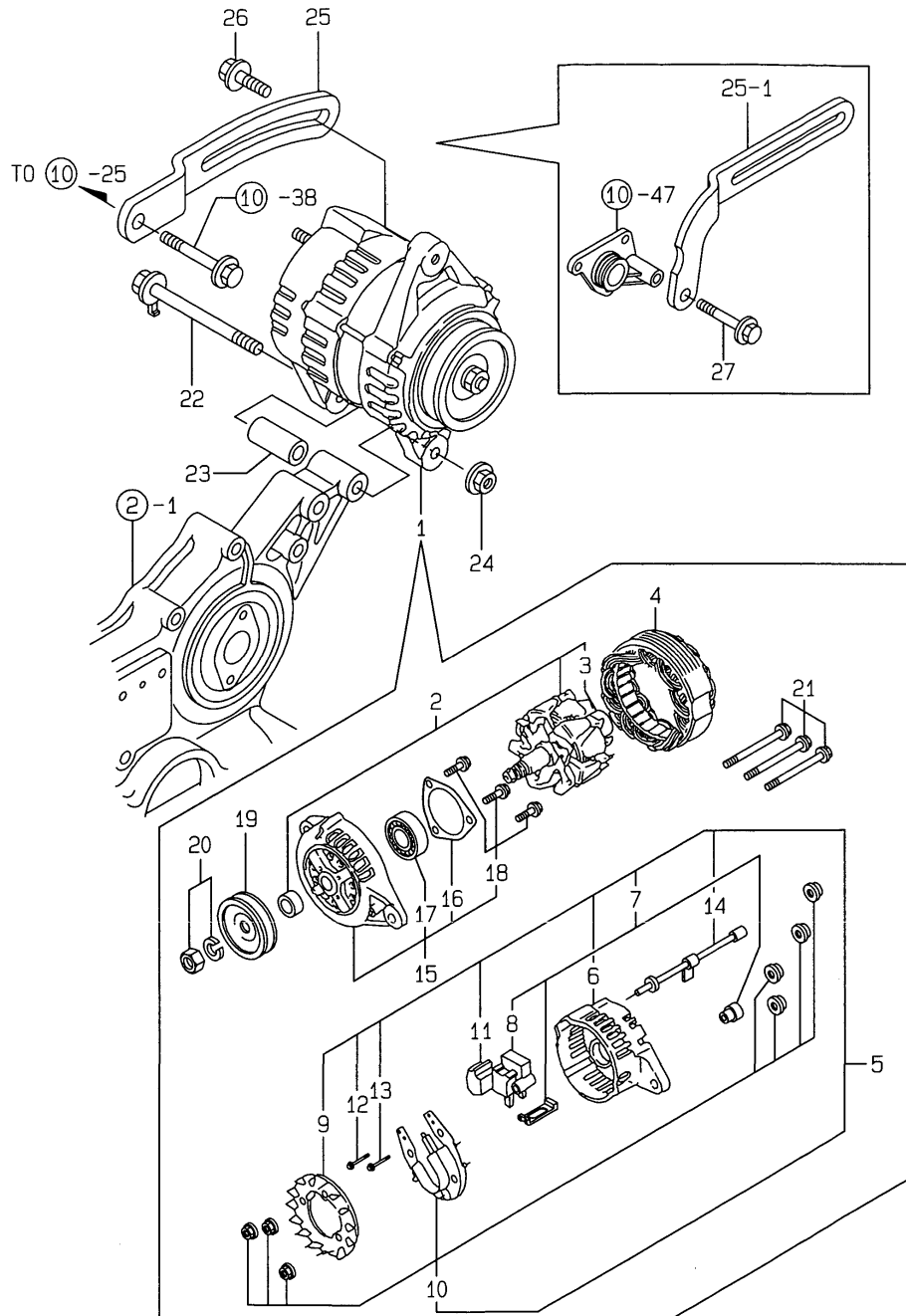
REF.	LEV.	PARTS NO.	DESCRIPTION	QTY						I	R
				(A)	(B)	(C)	(D)	(E)	(F)		
I	35	(A=E03814) (B=E03598) 3 X9490170900	WASHER	1	1						Z
I	36	(A=E03814) (B=E03598) 3 X9490170900	WASHER	1	1						Z
I	37	(A=E03814) (B=E03598) 3 X9490441303	BOLT	1	1						Z
I	38	(A=E03814) (B=E03598) 3 X9490441312	BOLT	1	1						Z
I	39	(A=E03814) (B=E03598) 3 X9490502820	NUT	1	1						Z
I	40	(A=E03814) (B=E03598) 3 X9490502820	NUT	1	1						Z
I	41	(A=E03814) (B=E03598) 3 X9491402100	O-RING	1	1						Z
I	42	(A=E03814) (B=E03598) 3 X9491402100	O-RING	1	1						Z
I	43	2 X1284000710	HOUSING	1	1						
I	43-1	2 121120-77280	HOUSING	1	1	1					S 2
I	43-2	2 129407-77280	HOUSING	1	1	1					S 3
I	44	(A=E06362) (B=E06304) (C=E00151) 2 X9019008651	NUT	1	1						
I	45	2 X9025806001	WASHER	2	2						Z
I	46	(A=E03814) (B=E03598) 2 X9025808001	WASHER	1	1						Z
I	47	2 X9490071970	SCREW W/WASHER	2	2						
I	47-1	2 129129-77320	BOLT	2	2	2					S 2
I	48	(A=E03814) (B=E03598) 2 X9490422570	BOLT	2	2						
I	48-1	(A=E03814) (B=E03598) 2 129407-77330	BOLT,W/WASHER	2	2	2					S 2
I	49	2 X9490561370	NUT	1	1	1					
I	50	2 X9491200240	BALL	1	1	1					
I	51	2 X9491403700	O-RING	2	2						
I	51-1	(A=E03814) (B=E03598) 2 129129-77350	O-RING	2	2	2					S 2
I	52	2 X9491703380	SPRING	1	1						
I	52-1	(A=E03814) (B=E03598) 2 129129-77340	SPRING	1	1	1					S 2
I	52A	(A=E03814) (B=E03598) 2 129129-77380	CAP	1	1	1					W
I	53	(A=E03814) (B=E03598) 1 26116-120252	BOLT M12X 25 PLATED	2	2	2					
I	54	1 129052-77951	CONNECTOR	1							W
I	55	(A=E06848) 2 129052-77960	305 1P HOUSING	1							W

Fig.19. GENERATOR

(A)=3TNE88-SA
(B)=3TNE88-G1A
(C)=3TNE88C-G1A

(D)=
(E)=
(F)=

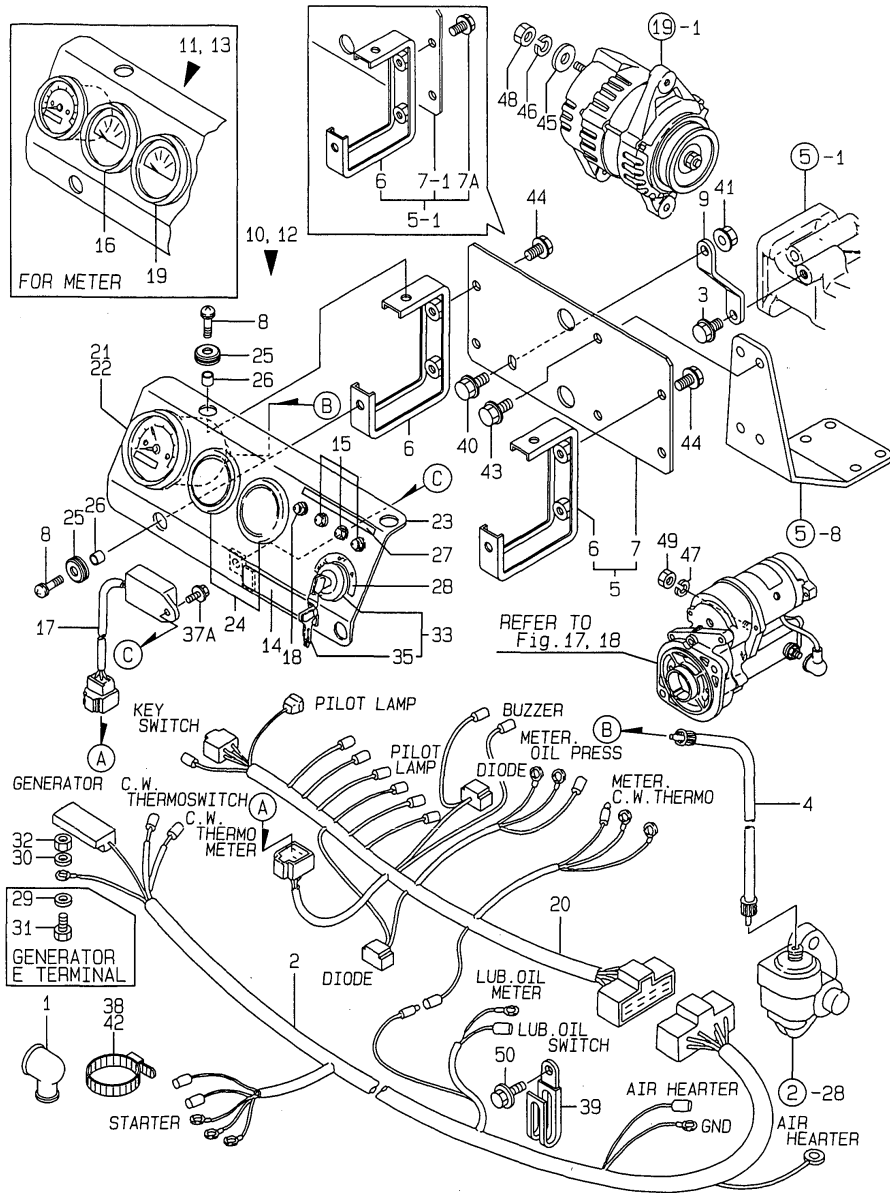
19. GENERATOR



REF.	LEV.	PARTS NO.	DESCRIPTION	QTY						I	R
				(A)	(B)	(C)	(D)	(E)	(F)		
1	1	119836-77200	GENERATOR	1	1	1					
2	2	119836-77700	ROTOR ASSY	1	1	1					
3	3	119836-77850	BALL BEARING	1	1	1					
4	2	119836-77710	STATOR ASSY	1	1	1					
5	2	119836-77721	COVER ASSY, REAR	1	1	1					
6	3	119836-77730	COVER, REAR	1	1	1					
7	3	119836-77741	BRUSH ASSY,REGULATOR	1	1	1					
8	4	119836-77750	BRUSH ASSY	1	1	1					
9	3	119836-77760	GUIDE, FAN SIDE	1	1	1					
10	3	119836-77770	DIODE ASSY	1	1	1					
11	3	119836-77780	CONDENSER	1	1	1					
12	3	119836-77871	BOLT (1)	1	1	1					
13	3	119836-77880	BOLT (2)	1	1	1					
14	3	119836-77890	WIRE ASSY, LEAD	1	1	1					
15	2	119836-77790	COVER ASSY, FRONT	1	1	1					
16	3	119836-77800	RETAINER, BEARING	1	1	1					
17	3	119836-77840	BALL BEARING	1	1	1					
18	3	119836-77860	SCREW KID	1	1	1					
19	2	119836-77810	PULLEY	1	1	1					
20	2	119836-77820	NUT ASSY, PULLEY	1	1	1					
21	2	119836-77830	BOLT, THROUGH	1	1	1					
22	1	129136-77250	BOLT M 8X105	1	1	1					
I 22-1	1	129136-77251	BOLT M 8X110	1	1	1					N
		(A=E06848) (B=E06806) (C=E00172)									
23	1	119820-77340	SPACER	1	1	1					
24	1	26366-080002	NUT M 8	1	1	1					
I 24-1	1	129612-77260	NUT ,GENERATOR	1	1	1					R
		(A=E04636) (B=E04520) (C=E00172)									
25	1	129410-77330	ADJUSTER, V-BELT	1	1						
I 25-1	1	129100-77330	ADJUSTER	1	1	1					N
		(A=E04636) (B=E04520)									
26	1	26014-080252	BOLT M 8X 25	1	1	1					
I 26-1	1	119810-77340	BOLT	1	1	1					N
		(A=E06848) (B=E06806) (C=E00172)									
I 27	1	26106-080502	BOLT M 8X 50 PLATED	1	1	1					W
		(A=E04636) (B=E04520)									

Fig.20. PANEL

20. PANEL



Remarks
 (1) WITH C.W.THERMOMETER(REF.NO.16,
 P/# 171010-77850) & PRESSURE
 GAUGE(REF.NO.19,P/# 171090-91010).

(A)=3TNE88-SA
 (B)=3TNE88-G1A
 (C)=3TNE88C-G1A

(D)=
 (E)=
 (F)=

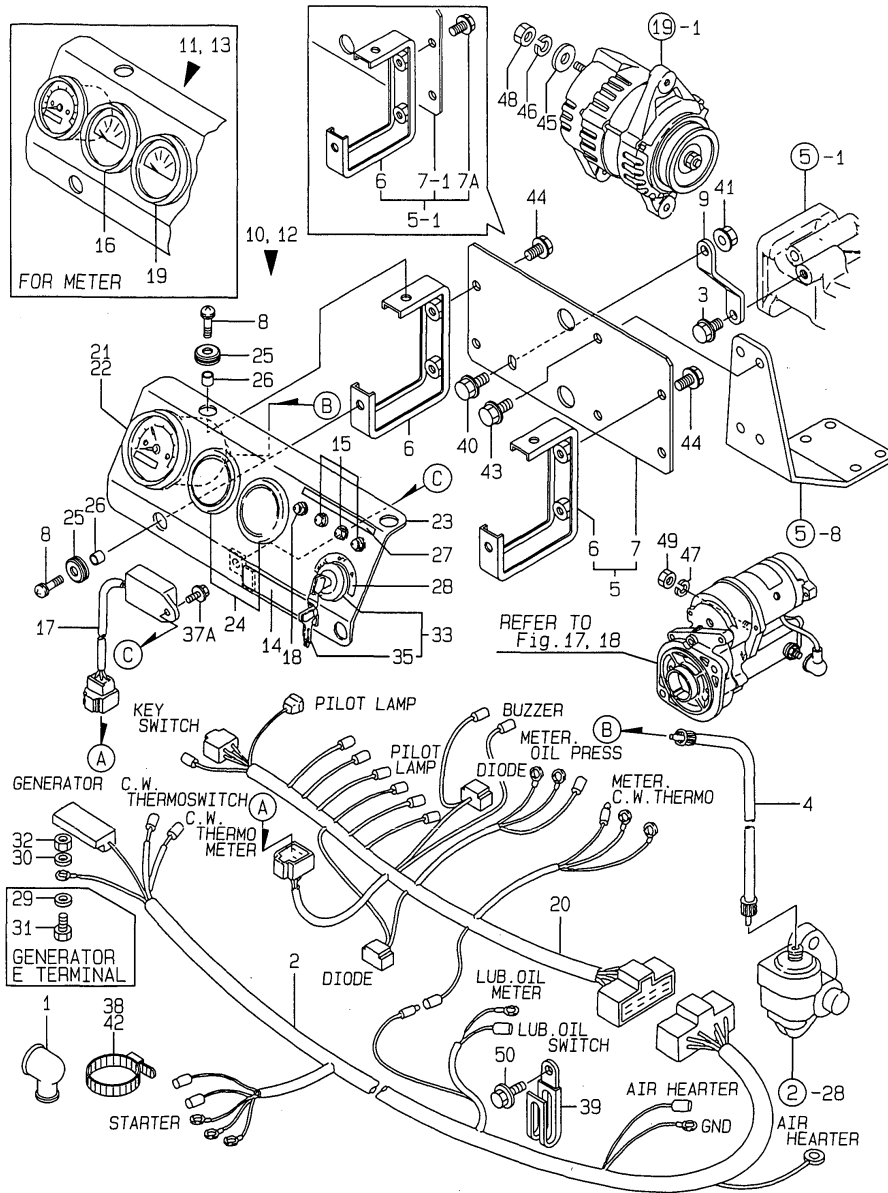
REF.	LEV.	PARTS NO.	DESCRIPTION	QTY						I	R
				(A)	(B)	(C)	(D)	(E)	(F)		
1	1	124550-77030	COVER, TERMINAL	1	1	1					
2	1	119888-91021	HARNESS (A), WIRE	1	1						
I	2-1	119888-91022	HARNESS(A), WIRE	1	1	1					N
3	1	(A=E03814) 26106-080162 (B=E02941)	BOLT M 8X 16 PLATED	1							
4	1	121400-91140	SHAFT, FLEXIBLE	1	1	1					
5	1	129608-91150	BRACKET ASSY, PANEL	1	1	1					
I	5-1	129608-91151	BRACKET ASSY, PANEL	1	1	1					N
6	2	(A=E05876) 119888-91120 (B=E05860) (C=E00140)	SUPPORT, PANEL	2	2	2					
7	2	129608-91130	BRACKET, PANEL	1	1	1					
I	7-1	2 129608-91131	BRACKET, PANEL	1	1	1					N
I	7A	(A=E05876) 2 26106-080122 (B=E05860) (C=E00140)	BOLT M 8X 12 PLATED	4	4	4					W
8	1	(A=E05876) 26033-060202 (B=E05860) (C=E00140)	SCREW M 6X 20	4	4	4					
9	1	129608-91140	STAY, INSTRU. PANEL	1	1	1					
10	1	119888-91101	PANEL ASSY, INSTRUM	1							
11	1	119888-91201	PANEL ASSY, INSTRUM	1							1
12	1	119888-91301	PANEL ASSY, INSTRUM		1	1					
13	1	119888-91311	PANEL ASSY, INSTRUM		1	1					1
14	2	104507-07190	LABEL, YANMAR	1	1	1					
15	2	124732-77720	LAMP, CHARGING	3	3	3					
16	2	171010-77850	THERMOMETER, C.W.	1	1	1					
17	2	128300-77920	TIMER	1	1	1					
18	2	124559-77971	LAMP, PILOT	1	1	1					
19	2	171090-91010	GAUGE, PRESSURE	1	1	1					
20	2	119888-91031	HARNESS (B), WIRE	1	1	1					
21	2	171080-91100	TACHOMETER	1							
22	2	171082-91100	TACHOMETER		1	1					
23	2	119888-91110	BODY	1	1	1					
24	2	124770-91220	COVER, BLIND	2	2	2					
25	2	121400-91520	ABSORBER	4	4	4					
26	2	121400-91530	SPACER	4	4	4					
27	2	119888-91610	LABEL, CW & OIL LAMP	1	1	1					
28	2	119888-91620	LABEL, KEY SWITCH	1	1	1					
I	29	2 22117-050000	WASHER 5	1							Z
I	30	(A=E05876) 2 22117-050000	WASHER 5	1							Z
I	31	(A=E05876) 2 26116-050102 (A=E05876)	BOLT M 5X 10 PLATED	1							Z
I	32	(A=E05876) 2 26716-050002 (A=E05876)	NUT M 5	1							Z
33	2	933110-00100	SWITCH ASSY, STARTER	1	1	1					
35	3	933110-00301	KEY ASSY	1	1	1					
I	37A	2 26106-060102 (A=E05876) (B=E05876) (C=E05876)	BOLT 6X 10 PLATED	1	1	1					W
38	1	121750-59890	CLAMP 140	1	1	1					
39	1	194180-51640	CLAMP, WIRE HARNESS	1	1	1					
40	1	26106-080162	BOLT M 8X 16 PLATED	1							

Fig.20. PANEL

(A)=3TNE88-SA
(B)=3TNE88-G1A
(C)=3TNE88C-G1A

(D)=
(E)=
(F)=

20. PANEL

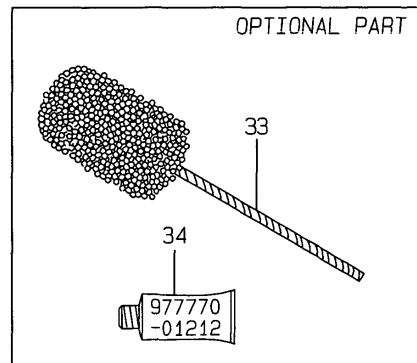
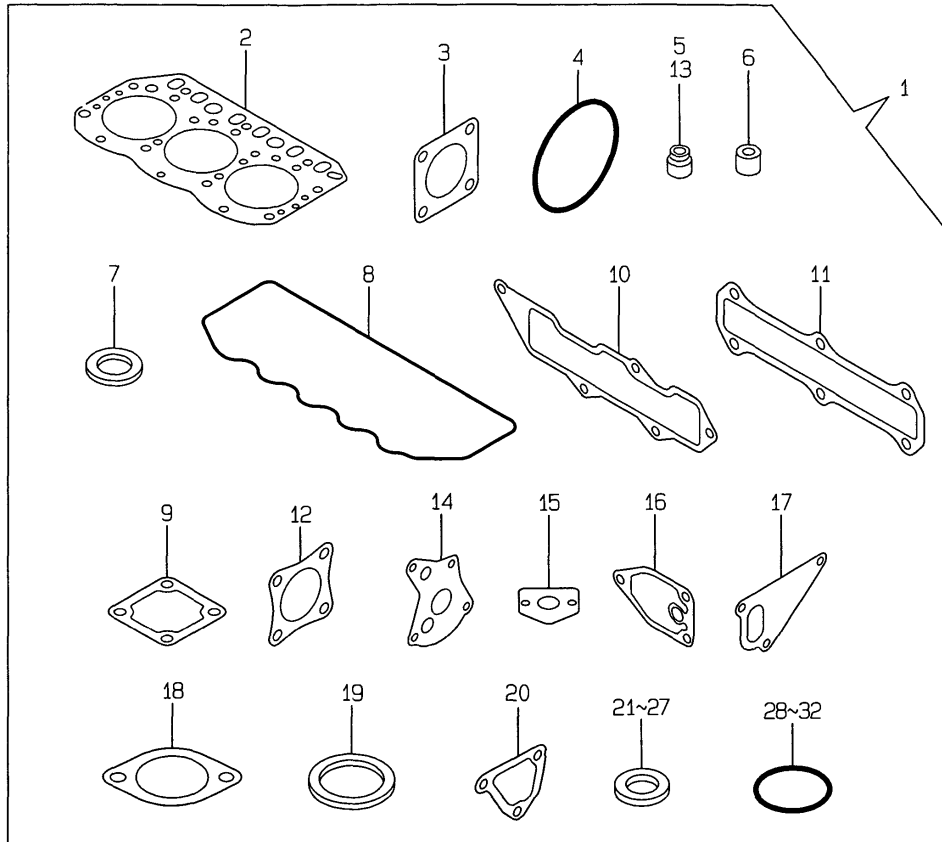


REF.	LEV.	PARTS NO.	DESCRIPTION	QTY						I	R
				(A)	(B)	(C)	(D)	(E)	(F)		
41	1	26366-080002	NUT M 8	1							
I 41-1	1	26306-080002	NUT	1							N
		(A=EXXX)									
42	1	121750-59890	CLAMP 140	1							
43	1	26106-080162	BOLT M 8X 16 PLATED	2	2	2					
I 44	1	26033-060202	SCREW M 6X 20	4	4	4					Z
		(A=EXXX) (B=EXXX) (C=EXXX)									
I 45	1	22117-050000	WASHER 5	1	1	1					W
		(A=EXXX) (B=EXXX) (C=EXXX)									
I 46	1	22217-050000	SPRING WASHER 5	1	1	1					W
		(A=EXXX) (B=EXXX) (C=EXXX)									
I 47	1	22217-080000	SPRING WASHER 8	1	1	1					W
		(A=EXXX) (B=EXXX) (C=EXXX)									
I 48	1	26716-050002	NUT M 5	1	1	1					W
		(A=EXXX) (B=EXXX) (C=EXXX)									
I 49	1	26756-080002	LOCK NUT M 8 PLATED	1	1	1					W
		(A=EXXX) (B=EXXX) (C=EXXX)									
I 50	1	26106-100122	BOLT M10X 12 PLATED	1							W
		(A=EXXX)									

Remarks
(1) WITH C.W.THERMOMETER(REF.NO.16,
P/# 171010-77850) & PRESSURE
GAUGE(REF.NO.19,P/# 171090-91010).

Fig.21. GASKET SET

21.GASKET SET



Remarks
(1) OPTIONAL PART.

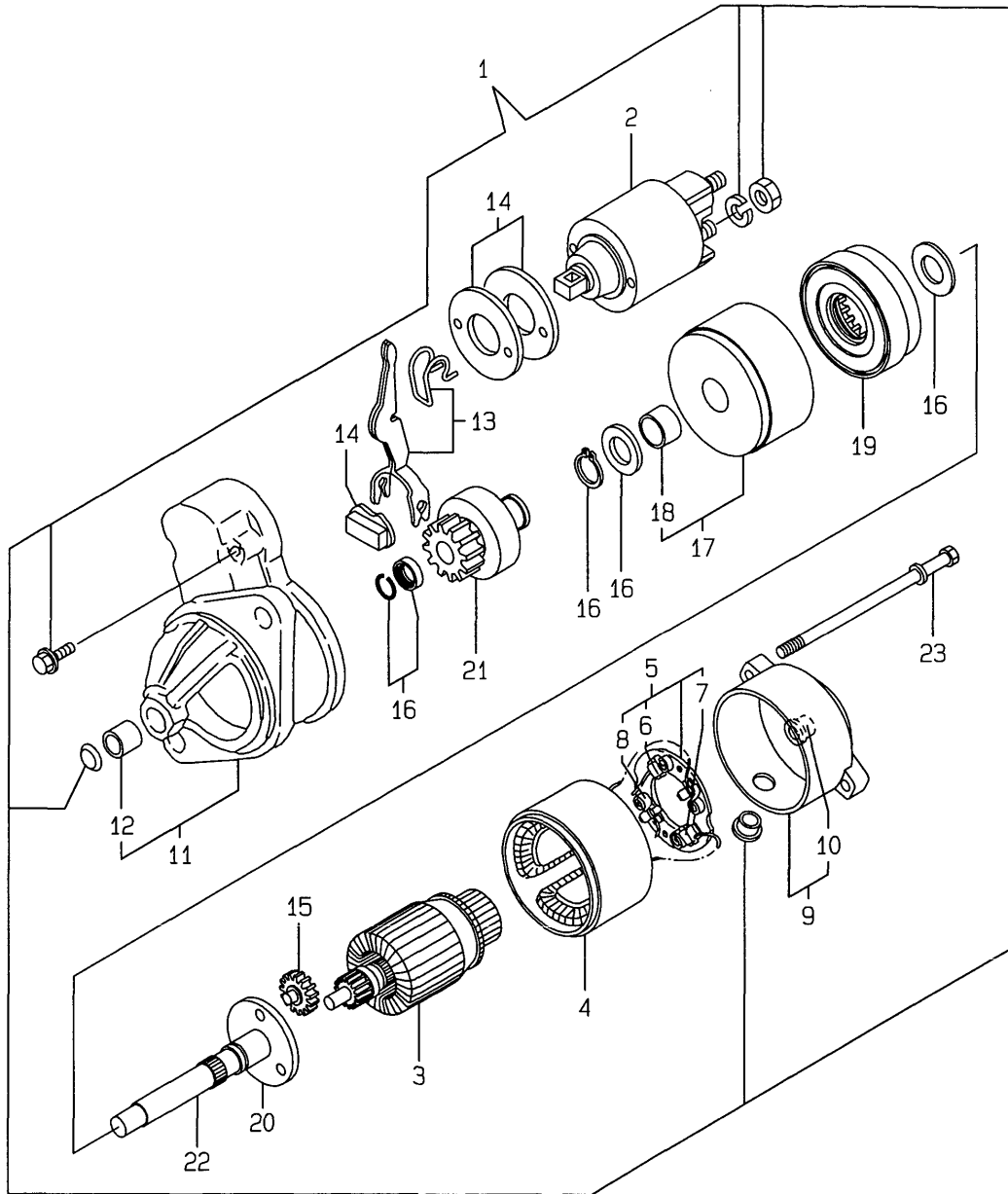
(A)=3TNE88-SA
(B)=3TNE88-G1A
(C)=3TNE88C-G1A

(D)=
(E)=
(F)=

REF.	LEV.	PARTS NO.	DESCRIPTION	QTY						I	R
				(A)	(B)	(C)	(D)	(E)	(F)		
1	1	729209-92600	GASKET SET(NON-ASB.)	1	1	1					1
I	2	129001-01340	GASKET, (NON-ASB.)	1	1	1					
	2	124240-01883	GASKET, (NON-ASB.)	1	1	1					
	2	121850-51960	O-RING, F.I.PUMP	1	1	1					
	2	121400-11340	SEAL, VALVE STEM	3	3	3					
	2	119625-11871	PROTECTOR, NOZZLE	3	3	3					
I	6-1	2 119625-11870	PROTECTOR, NOZZLE	3	3	3					N
		(A=EXXX) (B=EXXX) (C=EXXX)									
	2	119625-11880	SEAT, NOZZLE	3	3	3					
	2	129150-11310	GASKET, BONNET	1	1	1					
	2	129150-77511	GASKET, (NON-ASB.)	1	1	1					
	2	129001-12110	GASKET,INT. MANIFOLD	1	1	1					
	2	129001-13110	GASKET, EXH.MANIFOLD	1	1	1					
	2	121000-13201	GASKET, SILENCER	1	1	1					
	2	124460-11340	SEAL, VALVE STEM	3	3	3					
	2	129150-32020	GASKET, L.O. PUMP	1	1	1					
	2	129150-35041	GASKET, (NON-ASB.)	1	1	1					
	2	129150-35111	GASKET, (NON-ASB.)	1	1	1					
	2	129100-42020	GASKET, C.W. PUMP	1	1	1					
	2	129795-49551	GASKET, (NON-ASB.)	1	1	1					
	2	129150-49811	GASKET, (NON-ASB.)	1	1	1					
	2	129100-49840	GASKET, THERMO. CASE	1	1	1					
	2	104200-59170	GASKET 12	2	2	2					
I	21-1	2 22190-120002	SEAL WASHER 12	2	2	2					N
		(A=E04833) (B=E04704) (C=E00103)									
	2	22190-080002	SEAL WASHER 8S	5	5	5					
	2	129150-49360	GASKET 10	1	1	1					
	2	23414-120000	GASKET 12, ROUND	2	2	2					
	2	124465-44950	GASKET 16	2	2	2					
	2	23414-080000	GASKET 8, ROUND	2	2	2					
I	26-1	2 22190-080002	SEAL WASHER 8S	2	2	2					N
		(A=EXXX) (B=EXXX) (C=EXXX)									
	2	23414-100000	GASKET 10, ROUND	2	2	2					
	2	24311-000120	O-RING 1A P 12.0	3	3	3					
	2	24311-000160	O-RING 1A P-16.0	3	3	3					
	2	24311-000320	O-RING 1A P-32.0	2	2	2					
	2	24341-000240	O-RING 1A S-24.0	1	1	1					
	2	24341-000500	O-RING 1A S-50.0	1	1	1					
I	33	1 129400-92430	HORN, FLEX	1	1	1					1
	1	977770-01212	GASKET, LIQUID	1	1	1					1
I	35	1 119621-99100	TOOL,CARB HIGH IDLE (C=EXXX)			1					W
I	36	1 119621-99400	TOOL ASSY,CARB FUEL (C=EXXX)			1					W
I	37	2 119621-99200	TOOL,CARB FUEL LIMIT (C=EXXX)			1					W
I	38	2 119621-99300	TOOL,CARB FUEL LIMIT (C=EXXX)			1					W

Fig.22. STARTING MOTOR

22.STARTING MOTOR (COLD DISTICT) (INNER PART)



(A)=3TNE88-SA
 (B)=3TNE88-G1A
 (C)=3TNE88C-G1A

(D)=
 (E)=
 (F)=

REF.	LEV.	PARTS NO.	DESCRIPTION	QTY						I	R
				(A)	(B)	(C)	(D)	(E)	(F)		
1	1	129608-77010	STARTNG MOTOR	1							
2	2	129698-77020	MAGNETIC SWITCH ASSY	1							
3	2	129698-77100	ARMATURE ASSY	1							
4	2	129608-77110	YOKE ASSY	1							
5	2	129698-77120	HOLDER ASSY,BRUSH	1							
6	3	129698-77140	BRUSH(+) SET	1							
7	3	129698-77130	BRUSH (-)	2							
8	3	129698-77150	SPRING, BRUSH	4							
9	2	129698-77160	COVER ASSY, REAR	1							
10	3	129698-77170	REAR COVER METAL	1							
11	2	129698-77260	HOUSING ASSY, GEARS	1							
12	3	X2114535200	METAL, STARTER	1							
13	2	129698-77270	LEVER, SHIFT	1							
14	2	129698-77280	COVER ASSY, DUST	1							
15	2	129698-77240	GEAR	3							
16	2	129698-77250	WASHER SET	1							
17	2	129698-77180	BRACKET	1							
18	3	129698-77190	BRACKET	1							
19	2	129698-77200	INTERNAL GEAR	1							
20	2	129698-77210	BRACKET	1							
21	2	129698-77220	PINION ASSY	1							
22	2	129698-77230	SHAFT(PINION	1							
23	2	124195-77770	THROUGH BOLT	2							

Remarks
 USED FROM E06848.

Fig.23. SHORT BLOCK

(A)=3TNE88-SA (D)=
 (B)=3TNE88-G1A (E)=
 (C)=3TNE88C-G1A (F)=

REF.	LEV.	PARTS NO.	DESCRIPTION	QTY						I	R
				(A)	(B)	(C)	(D)	(E)	(F)		
1	1	729224-01000	BLOCK ASSY, SHORT	1	1	1					
2	2	129001-01000	BLOCK ASSY, CYLINDER	1	1	1					
3	2	129100-01580	PIN, PARALLEL	2	2	2					
4	2	129100-01580	PIN, PARALLEL	2	2	2					
5	2	729402-01650	CASE ASSY, OIL SEAL	1	1	1					
6	2	129795-01950	PIPE, KNOCK L=18	2	2	2					
7	2	129001-02800	MATAL ASSY, MAIN	4	4	4					
8	2	129150-02931	BEARING ASSY, THRUST	2	2	2					
9	2	129150-14200	TAPPET	6	6	6					
10	2	129129-14580	CAMSHAFT ASSY	1	1	1					
11	2	129001-21100	CRANKSHAFT ASSY	1	1	1					
12	2	129001-22081	PISTON ASSY	3	3	3					
13	2	129202-22300	PIN, PISTON	3	3	3					
14	2	729402-23100	ROD ASSY, CONNECTING	3	3	3					
15	2	129100-25061	SHAFT, IDLE GEAR	1	1	1					
16	2	129150-25101	GEAR, W/BUSH	1	1	1					
17	2	22252-000260	RING, 26	6	6	6					
18	2	22351-040010	PIN,4.0A X10	1	1	1					
19	2	22351-060012	PIN,6.0A X12	2	2	2					
20	2	22512-070140	KEY,7 X14	1	1	1					
21	2	26106-080142	BOLT, 8 X14	2	2	2					
22	2	26106-080452	BOLT, 8 X45	2	2	2					

NOT ILLUSTRATED

Remarks
 * NOT ILLUSTRATED.

Part Number Index

All parts are stipulated in the order of part numbers.

(Depending on the area in which the part is used.)

This index will display the location of the part according to each part number.

PARTS No. INDEX

PARTS No.	Fig.	Ref.No.
101304-59020	15	18
103854-39140	15	17
104200-55321	15	2
104200-55330	15	3
104200-55750	15	10
104200-59170	15	20
	21	21
104200-66820	16	9
104200-66830	16	10
104200-66850	16	11
104200-66860	16	12
104507-07190	20	14
105025-59750	14	67
	15	22 B
114250-53080	14	8
114250-53120	14	12
114250-53130	14	13
114250-53140	14	14
114250-53210	14	15
114250-53400	14	16
119131-18320	6	5 -1
119259-44570	11	5
		43
119305-59120	14	23
119358-13640	6	13
119600-66840	13	81 A
119620-01750	3	7
119620-13501	6	8
119620-13510	6	9
119620-13520	6	10
119620-13560	6	11
119621-66610	13	92
119621-66710	13	94
119621-99100	21	35
119621-99200	21	37
119621-99300	21	38
119621-99400	21	36
119625-11870	4	26 -1
	21	6 -1
119625-11871	4	26
	21	6
119625-11880	4	27
	21	7
119625-11900	4	28
119640-01640	3	14
119653-77950	13	88
119660-61901	13	65
119685-61940	13	81 B
119685-61950	13	81 C
119808-12520	5	17

PARTS No.	Fig.	Ref.No.
119808-12520	5	22
119808-12530	5	18
		23
119808-12540	5	19
		25
119810-51040	12	7
119810-53000	14	4
119810-77340	19	26 -1
119820-77340	19	23
119822-12500	5	20
119822-12510	5	21
119836-77200	19	1
119836-77700	19	2
119836-77710	19	4
119836-77721	19	5
119836-77730	19	6
119836-77741	19	7
119836-77750	19	8
119836-77760	19	9
119836-77770	19	10
119836-77780	19	11
119836-77790	19	15
119836-77800	19	16
119836-77810	19	19
119836-77820	19	20
119836-77830	19	21
119836-77840	19	17
119836-77850	19	3
119836-77860	19	18
119836-77871	19	12
119836-77880	19	13
119836-77890	19	14
119840-59560	14	52
119840-59570	14	53
119843-61540	13	54
119865-21600	8	17
		25
119888-01600	3	2
119888-08110	11	2
119888-21450	8	50
119888-66110	16	5
119888-66120	16	1
119888-66130	16	6
119888-66150	16	2
119888-66160	16	3 A
119888-91021	20	2
119888-91022	20	2 -1
119888-91031	20	20
119888-91101	20	10
119888-91110	20	23

PARTS No.	Fig.	Ref.No.
119888-91120	20	6
119888-91201	20	11
119888-91301	20	12
119888-91311	20	13
119888-91610	20	27
119888-91620	20	28
119988-61070	13	9 A
119988-61400	13	22 A
119988-61460	13	29 A
120130-11860	4	12
121000-13201	6	7
	21	12
121023-01550	2	25
121025-49150	11	39 -1
121111-21501	8	13
121120-77011	18	1
121120-77012	18	1 -1
121120-77250	18	4 -1
121120-77280	18	43 -1
121120-77930	18	12
121250-44901	10	42
121250-59550	14	51
121256-44600	11	29
121400-11340	4	23
	21	5
121400-44650	11	7
121400-91140	20	4
121400-91520	20	25
121400-91530	20	26
121450-01560	2	6
121450-42450	10	41
121476-01620	3	6
121520-34810	9	18
121520-49160	11	39
121521-12400	5	7
121550-23200	8	39
121550-49111	10	14
121737-49150	11	38 -1
121737-49160	11	38
121750-59890	11	45
	20	38
		42
121850-11860	10	1
121850-21680	8	12
121850-51960	2	13
	21	4
121855-13821	6	14
121855-13830	6	15
122117-51560	12	51
122710-51090	12	11

PARTS No.	Fig.	Ref.No.
123500-13840	6	16
124066-59100	14	50
124160-01751	2	7
	4	61
124160-01910	1	5
124160-11360	4	59
124160-39140	9	34
124160-39450	9	33
124195-77770	17	34 X
	22	23
124240-01871	2	8
124240-01883	2	9
	21	3
124250-49351	10	45
124450-44510	11	23
124450-44530	11	25
124450-44550	11	28
124450-44560	11	26
124460-11340	4	24
	21	13
124465-44950	10	43
		44
	21	25
124550-21600	8	21
124550-51350	12	33
124550-51370	12	34
124550-59820	9	39
124550-59830	9	38 A
124550-66370	13	67
124550-77030	20	1
124559-77971	20	18
124664-13580	6	12
124701-11911	6	24
124732-77720	20	15
124736-07900	4	6
124766-59050	11	37 B
		38 B
	14	64
		66
	15	20 B
		22 A
		23
124770-11770	10	26
124770-91220	20	24
124950-51190	12	18
126650-12680	5	26
126650-66020	16	4
128300-77920	20	17
129001-01000	23	2
129001-01250	1	12 -1

PARTS No. INDEX

PARTS No.	Fig.	Ref.No.
129001-01340	1	28
	21	2
129001-02800	23	7
129001-02930	1	26 A
129001-11700	4	8
129001-12100	5	1
129001-12110	5	3
	21	10
129001-13100	6	1
129001-13110	6	2
	21	11
129001-21000	8	1
129001-21100	23	11
129001-22081	8	26
	23	12
129001-22500	8	28
129001-22900	8	42
129001-22950	8	44
129001-32001	9	1
129001-35300	9	29
129001-42001	10	2 -1
129001-42002	10	2 -2
129001-42040	10	47
129001-59811	14	29
129001-59821	14	36
129001-59831	14	43
129001-91840	2	21 -1
129002-59810	14	30
129002-59820	14	37
129002-59831	14	44
129051-12530	5	24
129052-55620	15	1
129052-59710	14	29 -1
129052-59720	14	36 -1
129052-59730	14	43 -1
129052-61050	13	7
129052-61060	13	8
129052-61070	13	9
129052-61390	13	36
129052-61500	13	37
129052-61540	13	53
129052-77951	17	36
	18	54
129052-77960	17	37
	18	55
129100-01580	3	1
		26
	8	2
	23	3
		4

PARTS No.	Fig.	Ref.No.
129100-01640	3	27
129100-01730	3	17
129100-01760	3	19
129100-11100	4	18
129100-11110	4	19
129100-11240	4	30
129100-11350	4	48
129100-11650	4	38
129100-23910	8	38
129100-25061	7	9
	23	15
129100-35301	9	24
129100-42002	10	2
129100-42020	10	13
	21	17
129100-49800	10	25
129100-49820	10	28
129100-49830	10	29
129100-49840	10	34
	21	20
129100-51300	12	28
129100-52100	12	96
129100-53100	14	9
129100-55650	15	4
129100-55670	15	6
129100-55680	15	7
129100-55690	15	8
129100-55700	15	9
129100-59951	14	55
129100-61400	13	22
129100-61440	13	83
129100-61650	13	84
129100-77330	19	25 -1
129115-59510	15	21
129116-61051	13	7 A
129120-44500	11	4
129120-44560	11	6
129120-77501	5	12
129129-01600	3	3
129129-14580	7	3
	23	10
129129-77010	17	1
129129-77210	17	6
129129-77220	17	7
129129-77230	17	8
	18	15 -1
129129-77240	17	9
	18	16 -1
129129-77250	17	10
129129-77260	17	21

PARTS No.	Fig.	Ref.No.
129129-77260	18	3 -1
		6 -1
129129-77270	17	22
	18	7 -1
		18 -1
129129-77280	17	23
129129-77290	17	24
	18	20 -2
129129-77300	17	25
129129-77310	17	27
129129-77320	17	28
	18	47 -1
129129-77330	17	29
129129-77340	17	30
	18	52 -1
129129-77350	17	31
	18	51 -1
129129-77361	17	32
129129-77362	17	32 -1
		32 -2
	18	2 -1
129129-77380	17	34
	18	52 A
129129-77390	17	14
	18	12 -1
129129-77400	17	17
	18	8 -1
129129-77410	17	18
	18	11 -1
129129-77420	17	19
	18	7 -2
129129-77430	17	20
	18	9 -1
129129-77440	18	12 A
129129-77450	18	12 B
129129-77460	17	3 -1
		3 -2
	18	23 -1
129132-49050	10	39
129136-34800	9	17 -1
129136-77250	19	22
129136-77251	19	22 -1
129150-01200	1	27
129150-02020	1	7
129150-02450	7	4
129150-02870	1	29
129150-02930	1	24
129150-02931	23	8
129150-02940	1	32
129150-03020	4	50

PARTS No.	Fig.	Ref.No.
129150-03070	4	51
129150-03080	4	52
129150-03100	2	11
129150-11230	4	39
129150-11280	4	33
129150-11290	4	34
129150-11310	4	55
	21	8
129150-11370	4	25
129150-11750	4	42
129150-11810	4	14
129150-14101	7	7
129150-14200	7	1
	23	9
129150-14400	7	2
129150-21200	8	5
129150-21650	8	10
129150-23600	8	40
129150-23610	8	48
129150-25101	7	10
	23	16
129150-25900	7	15
129150-25920	7	13
129150-32020	9	14
	21	14
129150-35041	9	19
	21	15
129150-35091	9	20
129150-35101	9	26
129150-35111	9	27
	21	16
129150-35151	9	28
129150-35350	9	30
129150-39450	9	35
129150-49080	11	34
129150-49100	11	33
129150-49360	10	46
	21	23
129150-49811	10	33
	21	19
129150-59131	14	26
129150-59580	14	54
129150-77511	5	13
	21	9
129150-91400	2	28
129155-11241	4	29
129155-11260	4	31
129155-11270	4	32
129155-42350	10	19
129155-49800	10	32

PARTS No. INDEX

PARTS No.	Fig.	Ref.No.
129155-51020	12	6
129155-51050	12	9
129155-51060	12	10
129155-51140	12	15
129155-51180	12	17
129155-51200	12	19
129155-51270	12	26
129155-51280	12	27
	13	4
129155-51320	12	31
129155-51340	12	32
129155-51370	12	35
129155-51380	12	36
129155-51390	12	37
129155-51400	12	38
129155-51410	12	39
129155-51420	12	40
129155-51450	12	41
129155-51500	12	46
129155-51521	12	47
129155-51530	12	48
129155-51540	12	49
129155-51550	12	50
129155-51570	12	53
129155-51580	12	54
129155-51591	12	55
129155-51600	12	56
129155-51700	12	75
129155-51710	12	76
129155-51750	12	77
129155-51760	12	78
129155-51790	12	79
129155-51930	12	81
129155-51940	12	82
129155-52050	12	95
129155-61120	13	10
129155-61130	13	11
129155-61140	13	12
129155-61201	13	13
129155-61341	13	19
129155-61350	13	20
129155-61360	13	21
129155-61430	13	25
129155-61450	13	29
		29 -1
129155-61460	13	30
129155-61470	13	90
129155-61480	13	31
129155-61830	13	64
129155-61950	13	66

PARTS No.	Fig.	Ref.No.
129156-51910	12	80
129188-08100	11	1
129188-21590	8	14
129188-44950	11	9
129188-44960	11	10
129188-44970	11	11
129188-44980	11	12
129202-22300	8	32
	23	13
129210-49120	11	38 A
129210-49280	11	37 A
129210-59020	15	20 A
129210-59130	14	65 -1
	15	22 -1
129211-44940	11	8
129211-49020	11	31 -1
129255-59580	14	65
	15	22
129350-49530	10	23
129350-49560	10	23 -1
129400-01520	2	5
129400-92430	21	33
129403-42380	10	18
129407-77010	18	1 -2
129407-77210	18	13 -1
129407-77220	18	14 -1
129407-77250	18	4 -2
129407-77280	18	43 -2
129407-77290	18	20 -1
129407-77300	18	21 -1
129407-77310	18	24 -1
129407-77330	18	48 -1
129407-77390	18	12 -2
129407-77410	18	10 -1
129410-77330	19	25
129412-61500	13	38
129420-44510	11	42
129470-39610	9	43
129470-51101	12	12 -1
129477-61720	13	87
129486-01670	3	30 -1
129500-61650	13	85
129503-53000	14	3
129506-51100	12	12
129608-12500	5	15
129608-12501	5	15 -1
129608-12510	5	16
129608-12511	5	16 -1
129608-12560	5	8 -1
129608-77010	18	1 -3

PARTS No.	Fig.	Ref.No.
129608-77010	22	1
129608-77110	22	4
129608-91130	20	7
129608-91131	20	7 -1
129608-91140	20	9
129608-91150	20	5
129608-91151	20	5 -1
129612-01600	3	4 -1
129612-77260	19	24 -1
129619-12210	5	6
129619-12560	5	8
129698-77010	17	1 -1
129698-77020	17	34 A
	22	2
129698-77100	17	34 B
	22	3
129698-77110	17	34 C
129698-77120	17	34 D
	22	5
129698-77130	17	34 F
	22	7
129698-77140	17	34 E
	22	6
129698-77150	17	34 G
	22	8
129698-77160	22	9
129698-77161	17	34 H
129698-77170	17	34 J
	22	10
129698-77180	17	34 R
	22	17
129698-77190	17	34 S
	22	18
129698-77200	17	34 T
	22	19
129698-77210	17	34 U
	22	20
129698-77220	17	34 V
	22	21
129698-77230	17	34 W
	22	22
129698-77240	17	34 P
	22	15
129698-77250	17	34 Q
	22	16
129698-77260	17	34 K
	22	11
129698-77270	17	34 M
	22	13
129698-77280	17	34 N

PARTS No.	Fig.	Ref.No.
129698-77280	22	14
129795-01780	3	29
129795-01800	2	4
129795-01950	2	10
	23	6
129795-02411	1	10
129795-11120	4	20
129795-11180	4	21
129795-21661	8	11
129795-49551	10	24
	21	18
144626-91560	9	45
158552-61900	13	75 -1
170064-67210	16	22
171010-77850	20	16
171048-67010	16	7
171048-67130	16	16
171048-67140	16	17
171051-01921	1	6
171080-91100	20	21
171082-91100	20	22
171085-67100	16	13
171085-67110	16	14
171085-67120	16	15
171090-91010	20	19
171102-66080	16	8
171301-01600	3	4
171301-01640	3	20
171301-49010	11	30
171301-49020	11	31
171340-21580	8	22
171340-21590	8	18
171340-21650	8	9
171340-44740	10	20
171350-03090	4	1
171353-44760	10	21
171353-61700	13	86
171375-39600	9	42
171375-39601	9	42 -1
171420-01600	3	5
171420-34800	9	16
171420-34820	9	17
171488-61200	13	14
174307-51170	12	16
174307-51560	12	52
174307-51700	13	39
194180-51640	20	39
194990-22050	6	3
		23
719810-01500	2	1

PARTS No. INDEX

PARTS No.	Fig.	Ref.No.
719810-53100	14	2
729001-01560	1	1
729102-01540	3	13
729209-51300	12	2
729209-51310	12	2 A
729209-51350	12	1
729209-92600	21	1
729224-01000	23	1
729402-01650	23	5
729402-11650	4	37
729402-23100	8	34
	23	14
729503-53100	14	1
933110-00100	20	33
933110-00301	20	35
977770-01212	2	32
	3	32
	21	34
X0280210230	17	11
	18	5
X0280620480	18	2
X0280630011	18	3
X0280992381	18	4
X0281003770	18	13
X0282002320	18	14
X0283060061	17	2
	18	17
X0283270140	17	12
	18	6
		6 -2
X0283711420	18	18
X0283711770	18	7
X0283712360	18	19
X0283810040	18	8
X0285011600	18	20
X0285100750	18	21
X0289030010	17	3
	18	23
X0534006470	18	24
X0534040320	18	25
X0534490120	18	26
		27
X0534490230	18	28
		29
X0535050620	18	30
X0535130241	18	31
X0535130320	18	32
X0536600401	18	33
X1284000710	18	43
X2114535200	17	34 L

PARTS No.	Fig.	Ref.No.
X2114535200	22	12
X2411367340	11	5 A
		44
X9019008651	18	44
X9025806001	18	45
X9025808001	18	46
X9151005141	18	34
X9490071970	18	47
X9490170900	18	35
		36
X9490422570	18	48
X9490441303	18	37
X9490441312	18	38
X9490502820	18	39
		40
X9490561370	17	4
	18	49
X9490721080	18	9
X9491002590	18	15
X9491002760	18	16
X9491200240	17	5
	18	50
X9491402100	18	41
		42
X9491403700	18	51
X9491703371	17	13
	18	10
X9491703380	18	52
X9491704260	18	11
X9491730461	17	26
	18	22

PARTS No.	Fig.	Ref.No.
-----------	------	---------

PARTS No.	Fig.	Ref.No.
-----------	------	---------



YANMAR CO., LTD.